

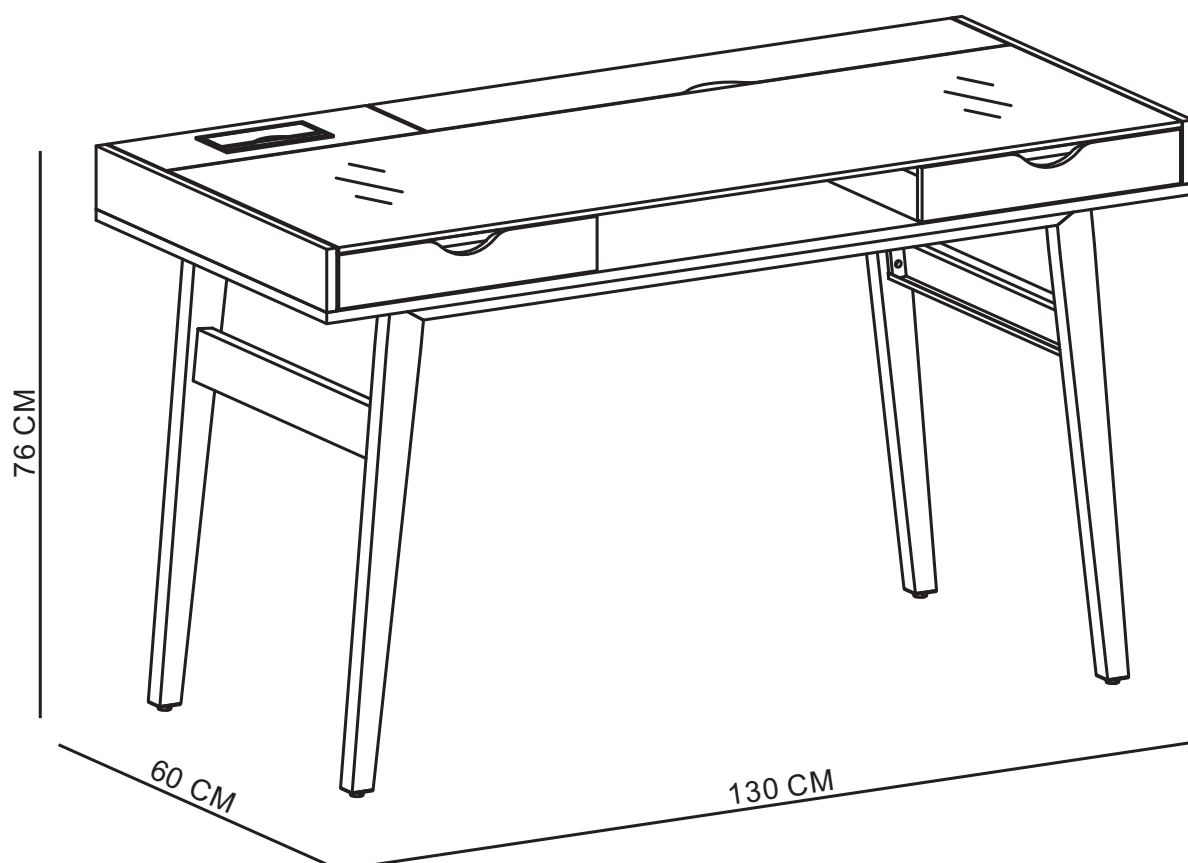


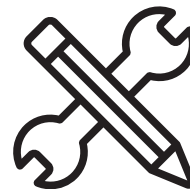
## MANUAL DE INSTRUCCIONES

MESA DE ORDENADOR MULTIFUNCION

MODELO:MB0147TT18-1

MODELO:MB0147TT18-2





## ADVERTENCIA

Siga las instrucciones que se detallan en el manual, si presenta alguna diferencia en el contenido de sus piezas pongase en contacto con la tienda donde fue adquirido.

## RECOMENDACIONES

- Estudie atentamente las instrucciones antes del montaje.
- Ordene las piezas que componen el mueble.
- Agrupe y ordene la quincallería.
- Prepare una zona despejada para el montaje.
- Monte las piezas sin forzar los ensambles, una vez armada toda la estructura, reaprete de forma definitiva.
- Volver a apretar los tornillos después de un tiempo de uso.
- Conserve estas instrucciones de montaje.



Herramientas requeridas  
(no incluidas)

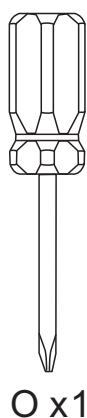
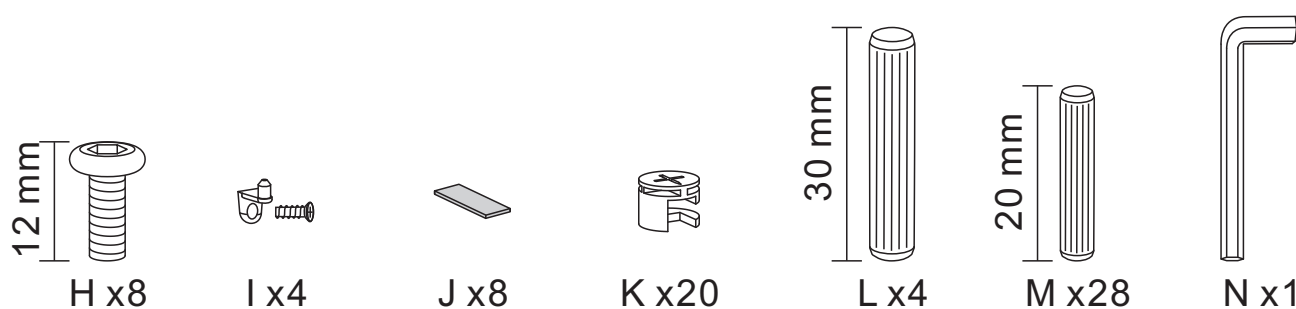
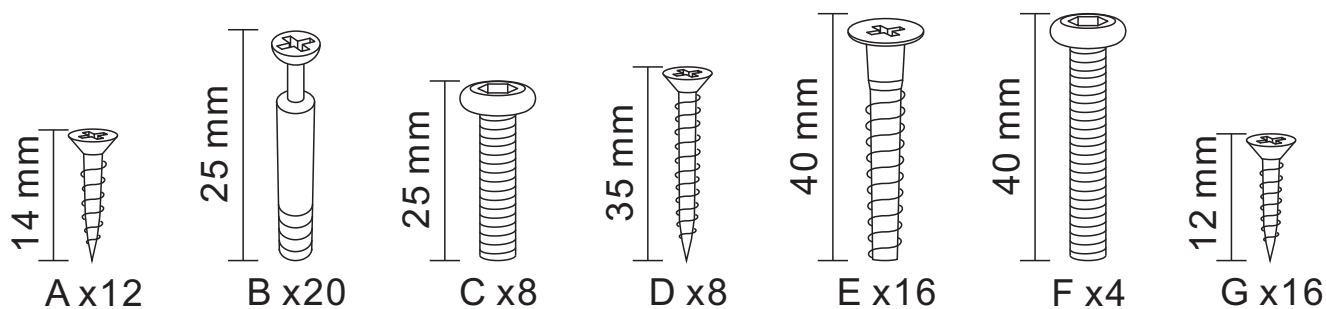


2 persona  
para el armado

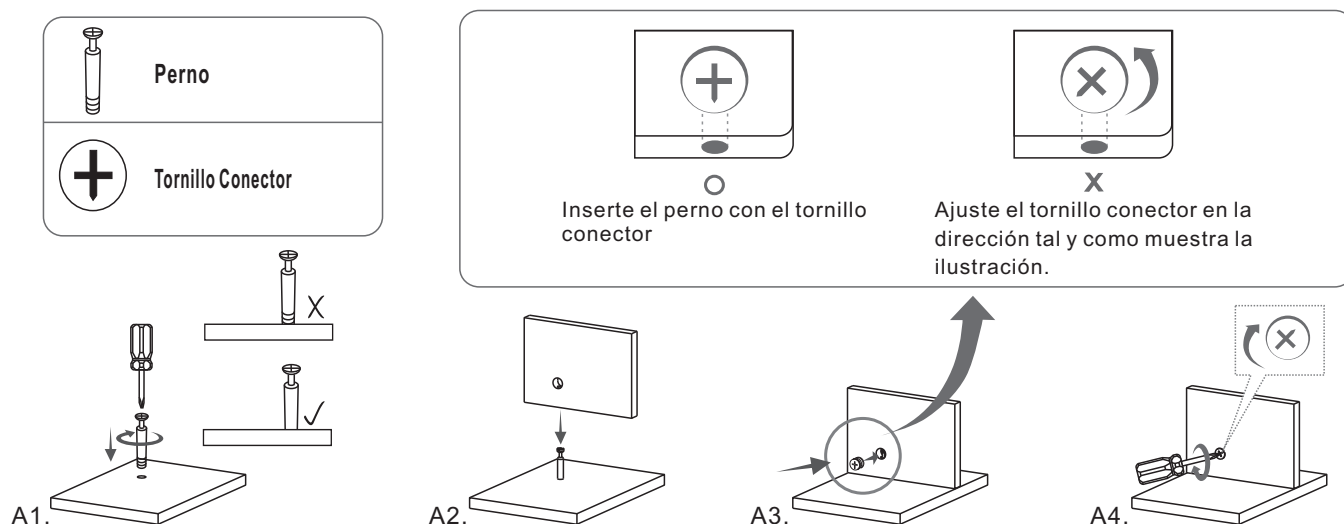


Producto contenido  
en 1 cajas

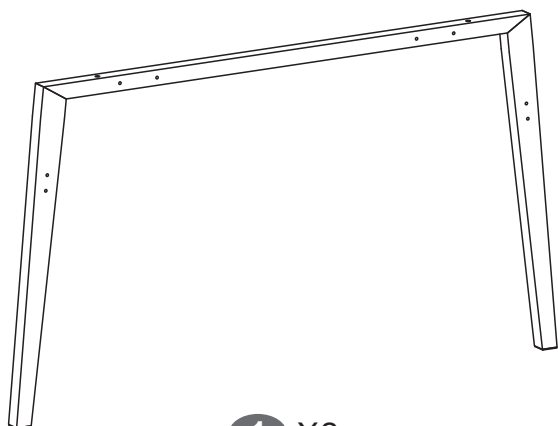
# QUINCALLERÍA



**Instale los pernos 6x25mm según la siguiente ilustración**



# PIEZAS



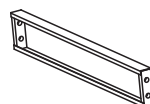
**1** X2



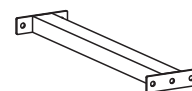
**2** X2



**3** X4



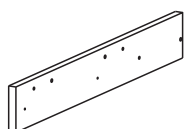
**4** X2



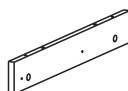
**5** X2



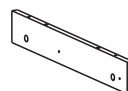
**6** X3



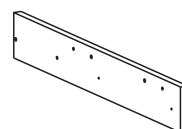
**7** X1



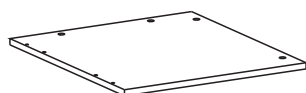
**8** X1



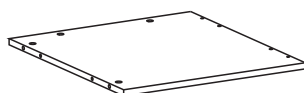
**9** X1



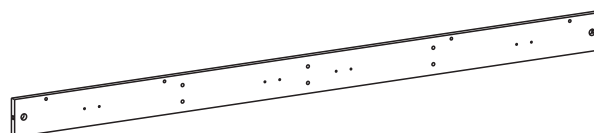
**10** X1



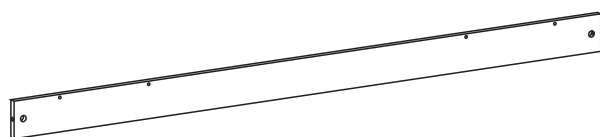
**11** X1



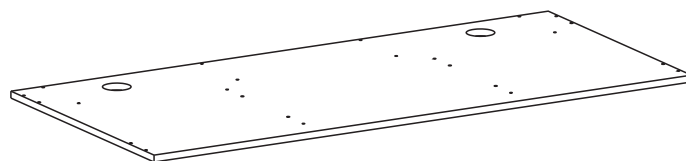
**12** X1



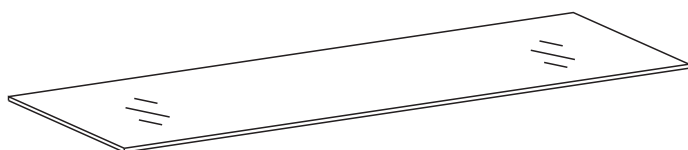
**13** X1



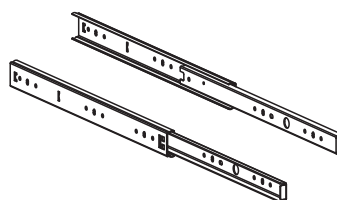
**14** X1



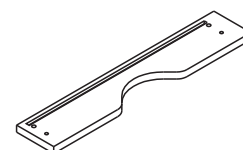
**15** X1



**16** X1

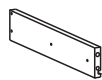


**17** X2



**18** X1

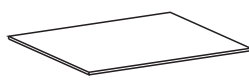
# PIEZAS



19 X2



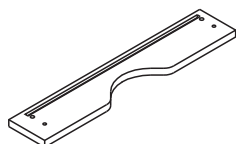
20 X2



21 X2



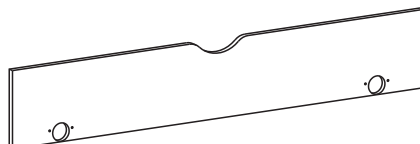
22 X2



23 X1



24 X2



25 X1



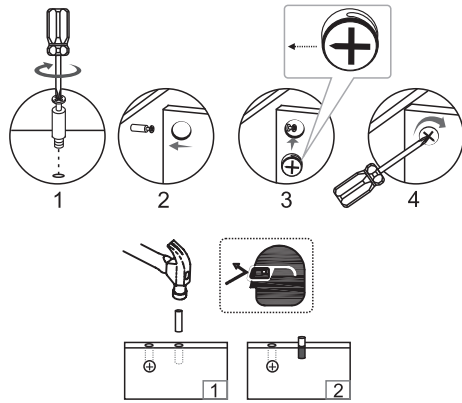
26 X1



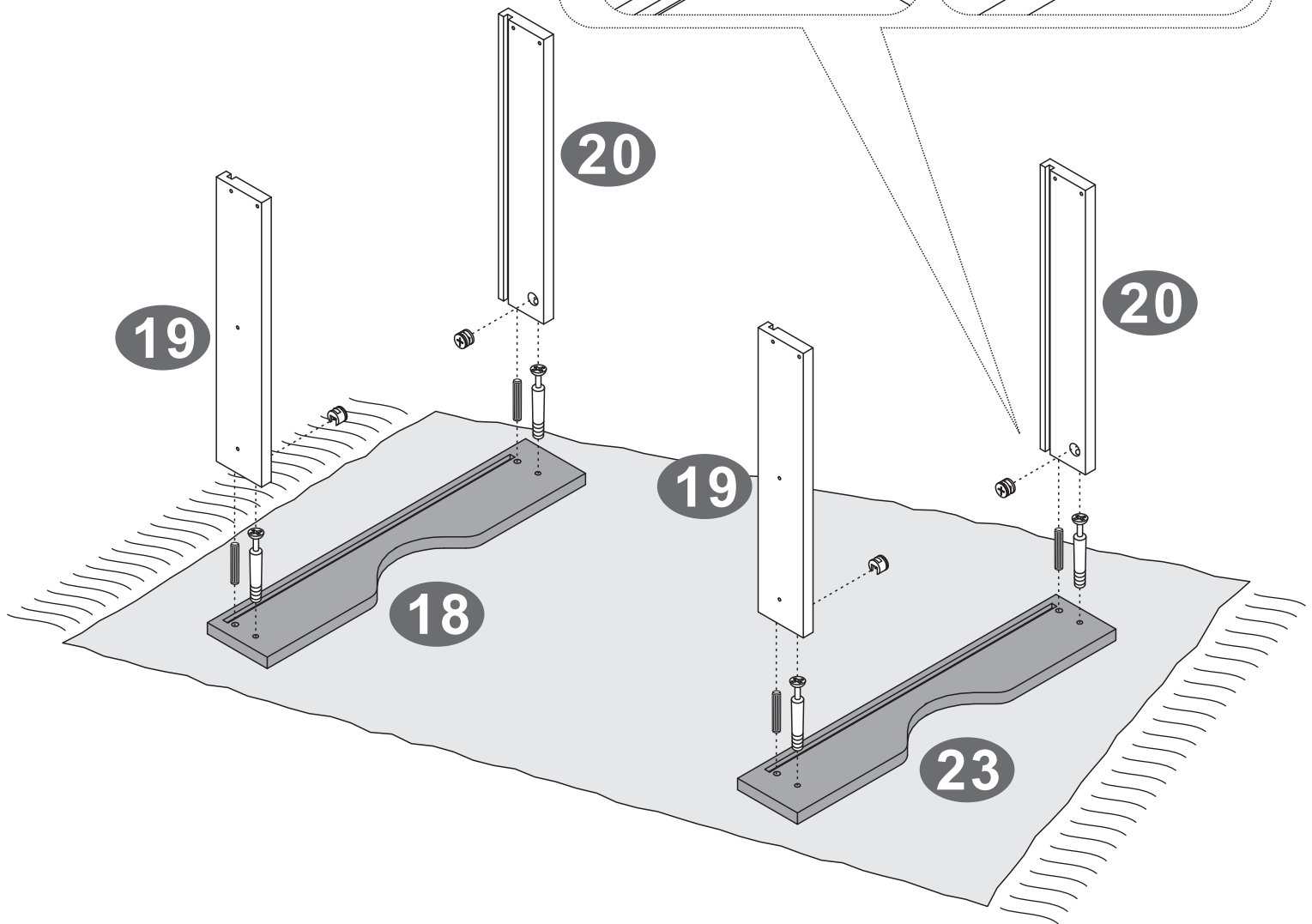
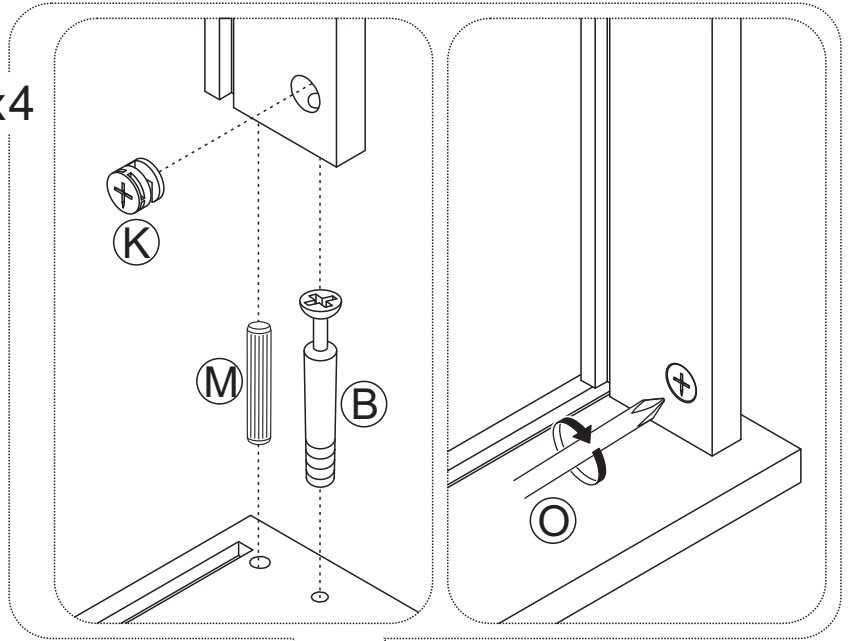
27 X1

# PASO 1

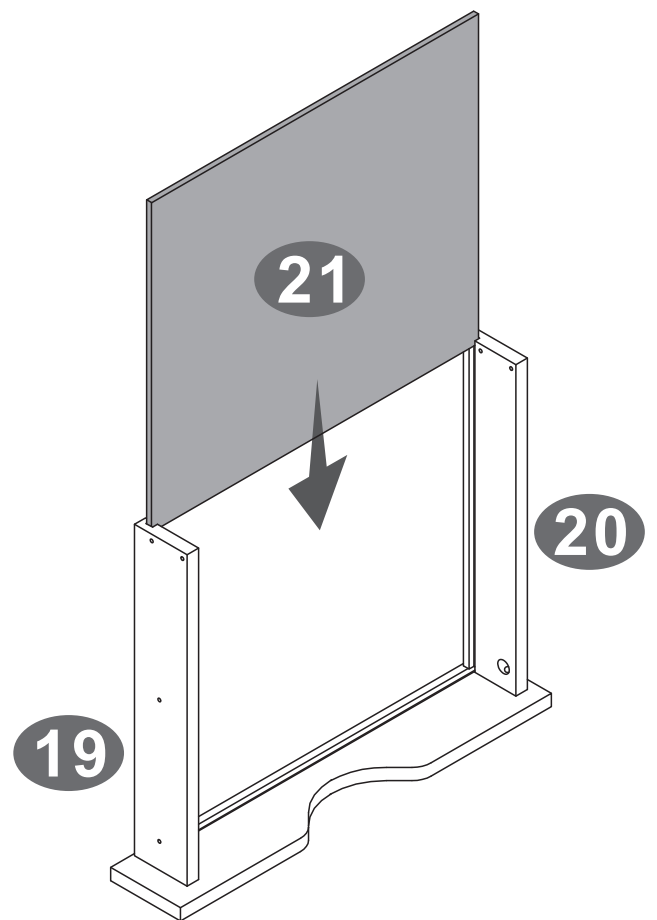
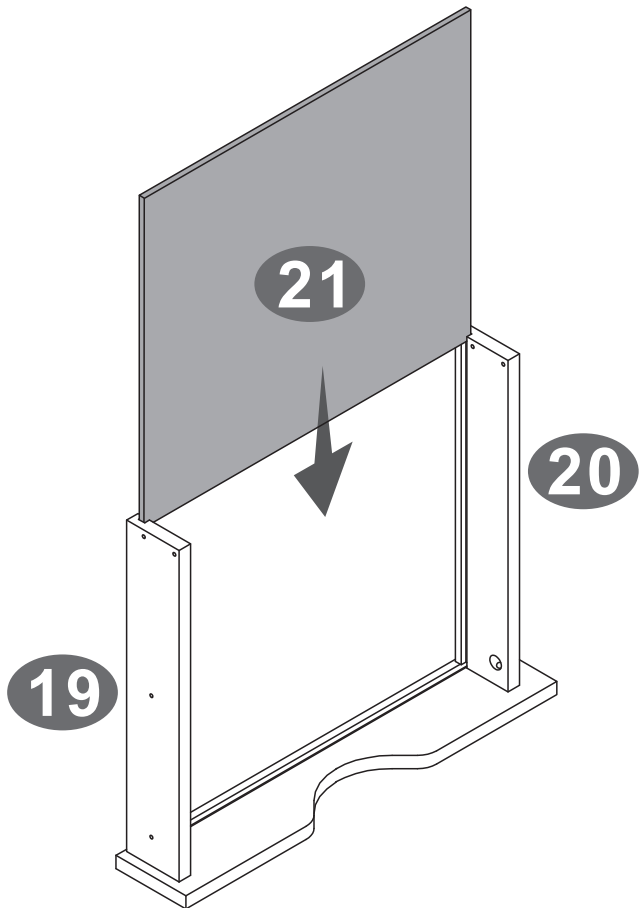
Monte las piezas sobre una superficie plana y protegida (con frazadas o cartones).



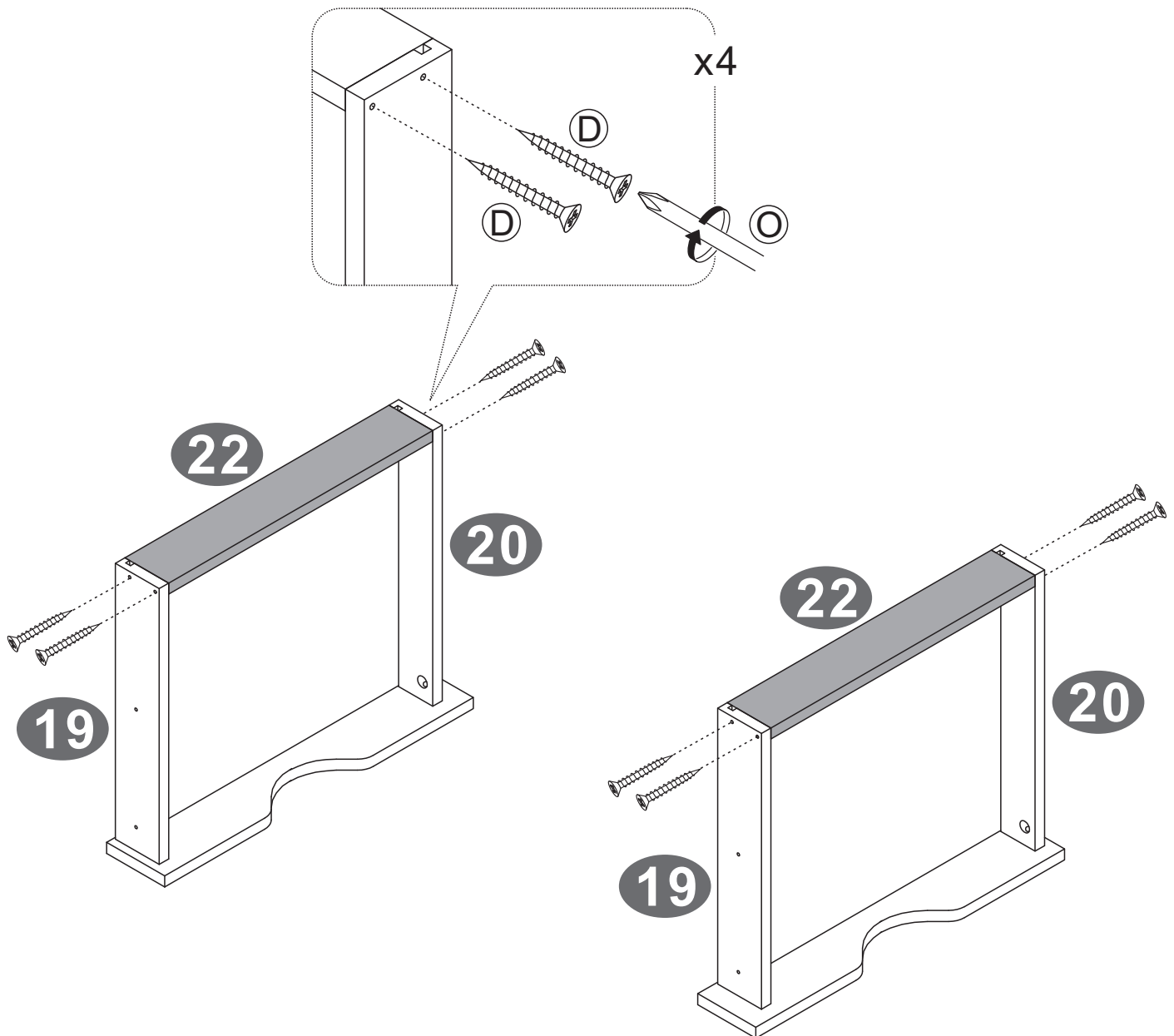
x4



## PASO 2

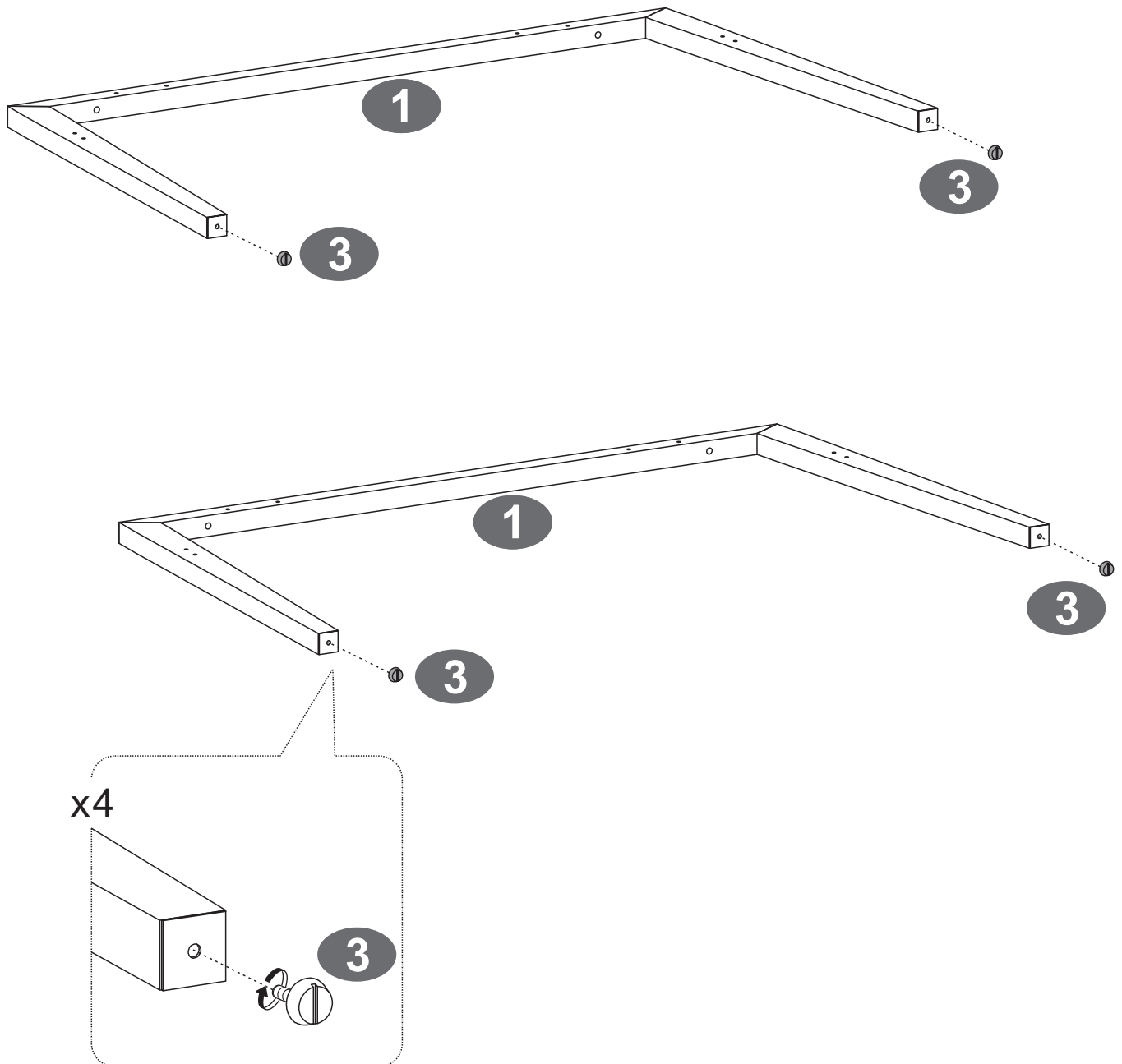


## PASO 3

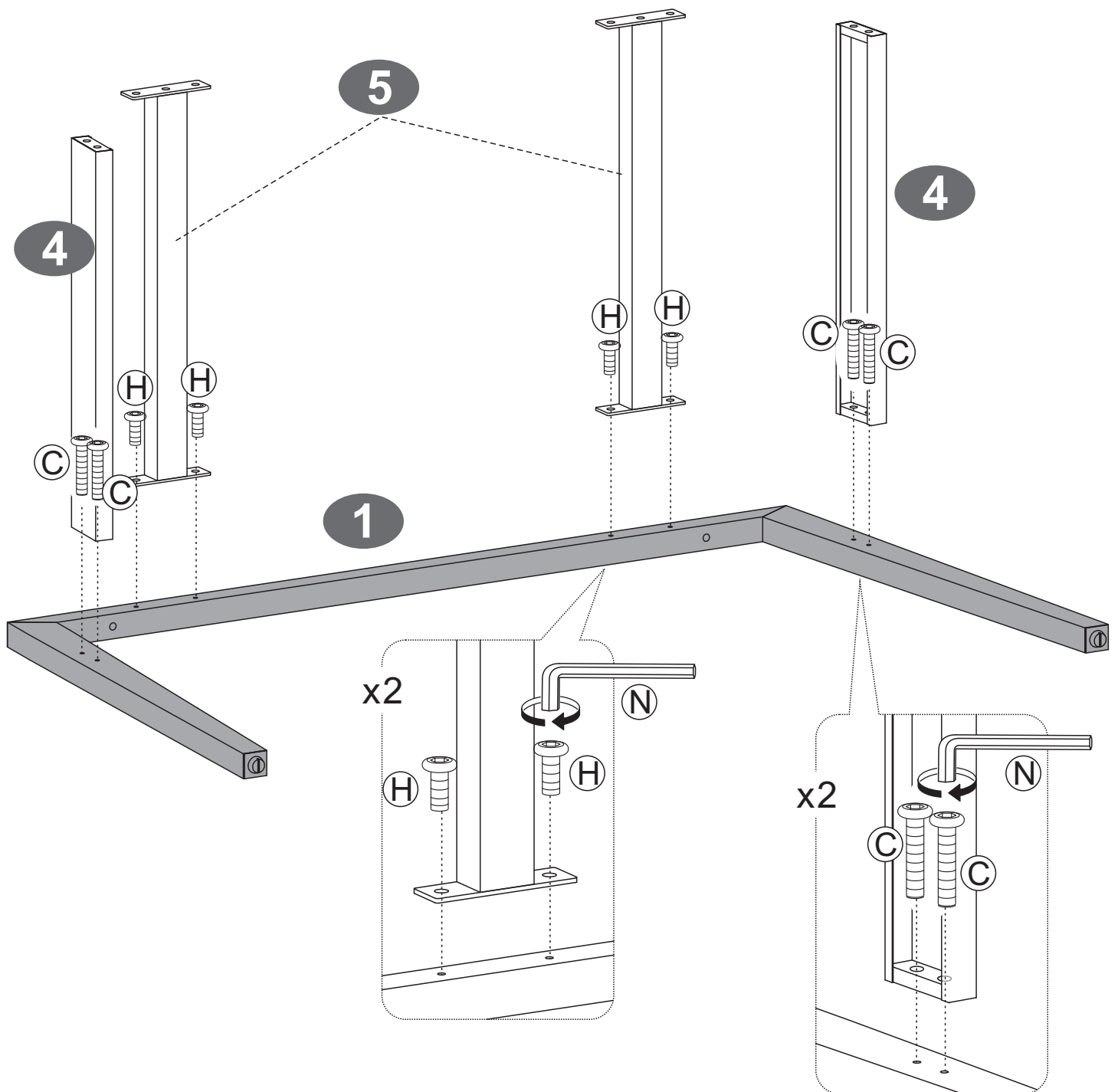




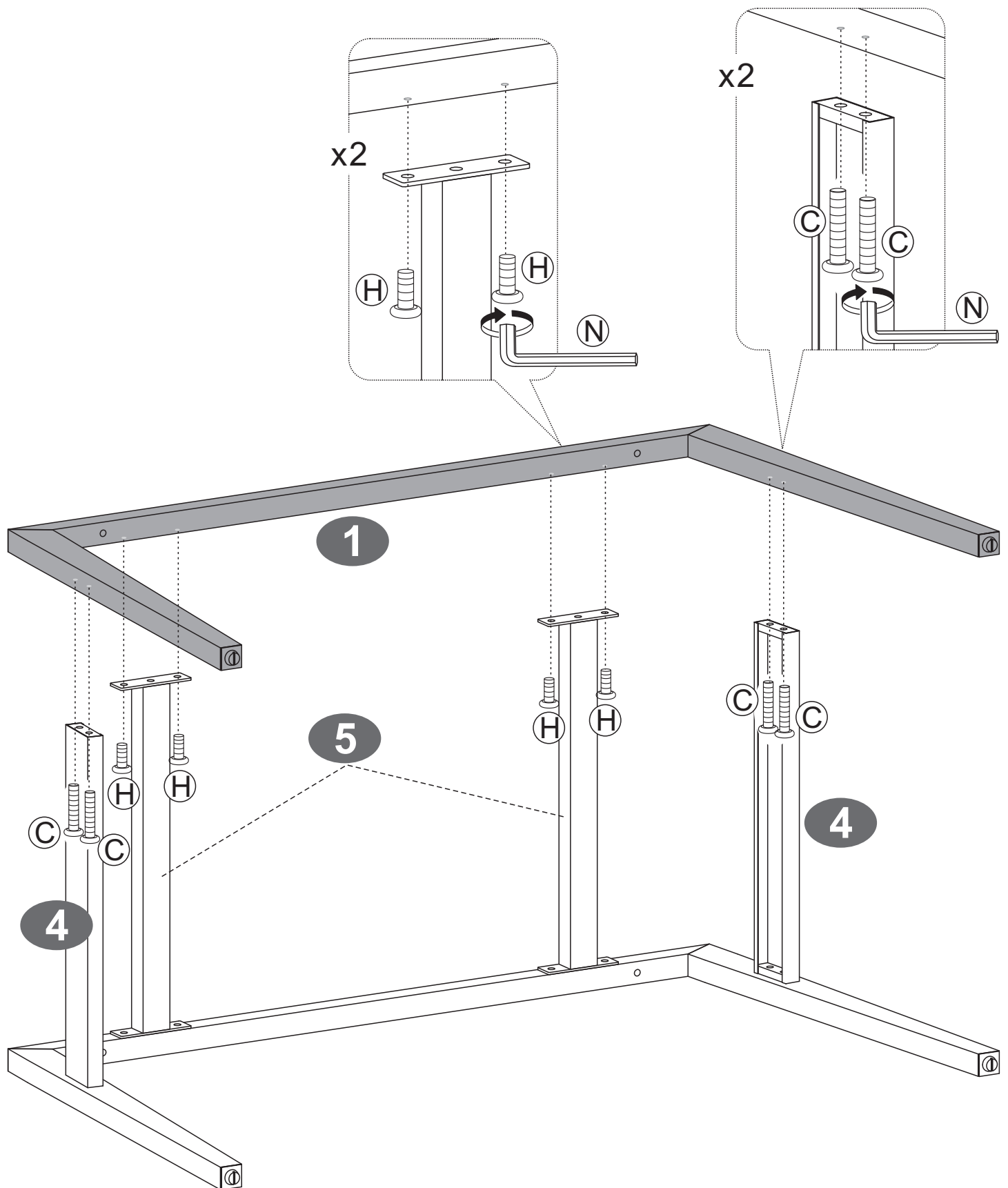
# PASO 4



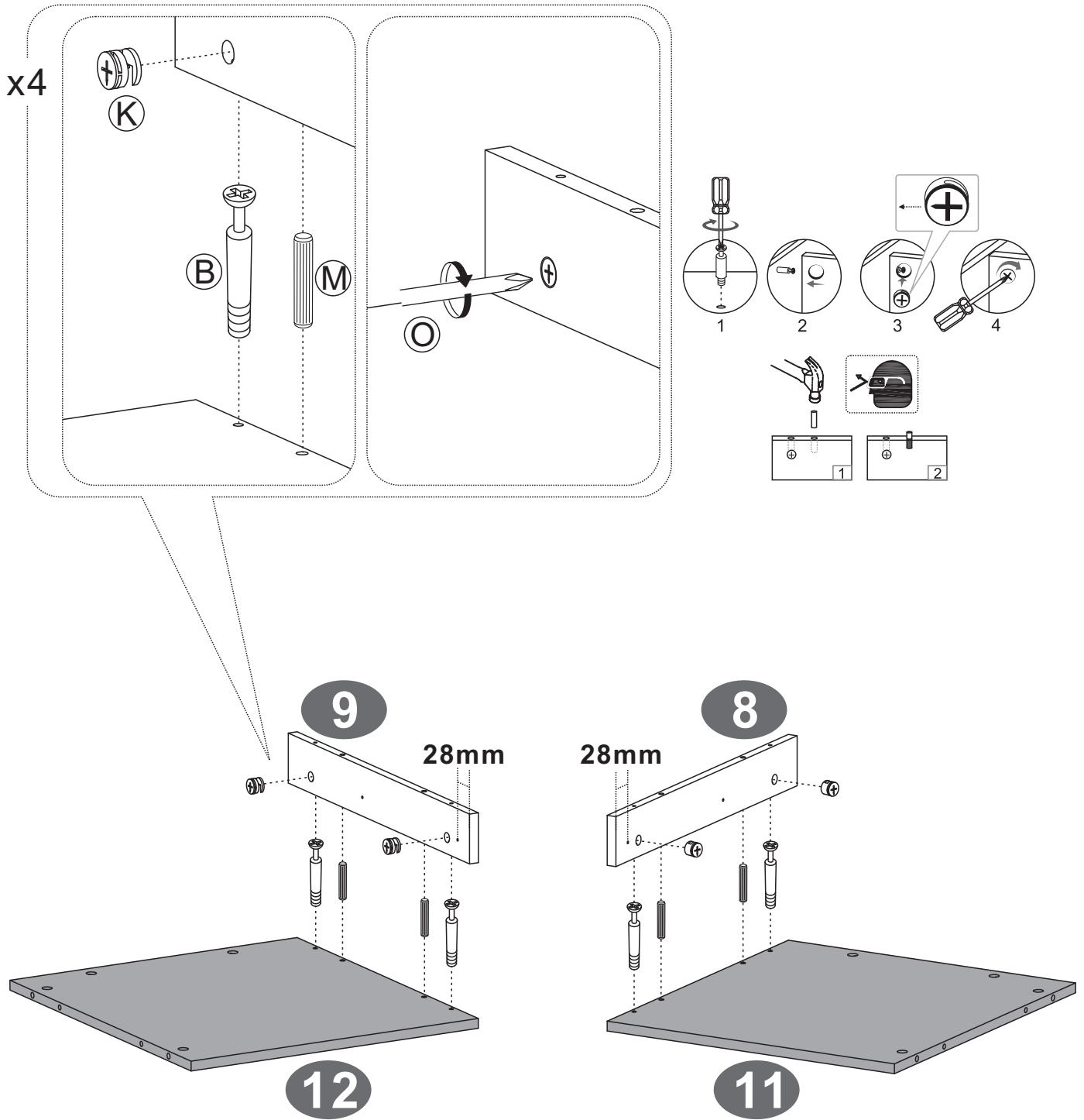
# PASO 5



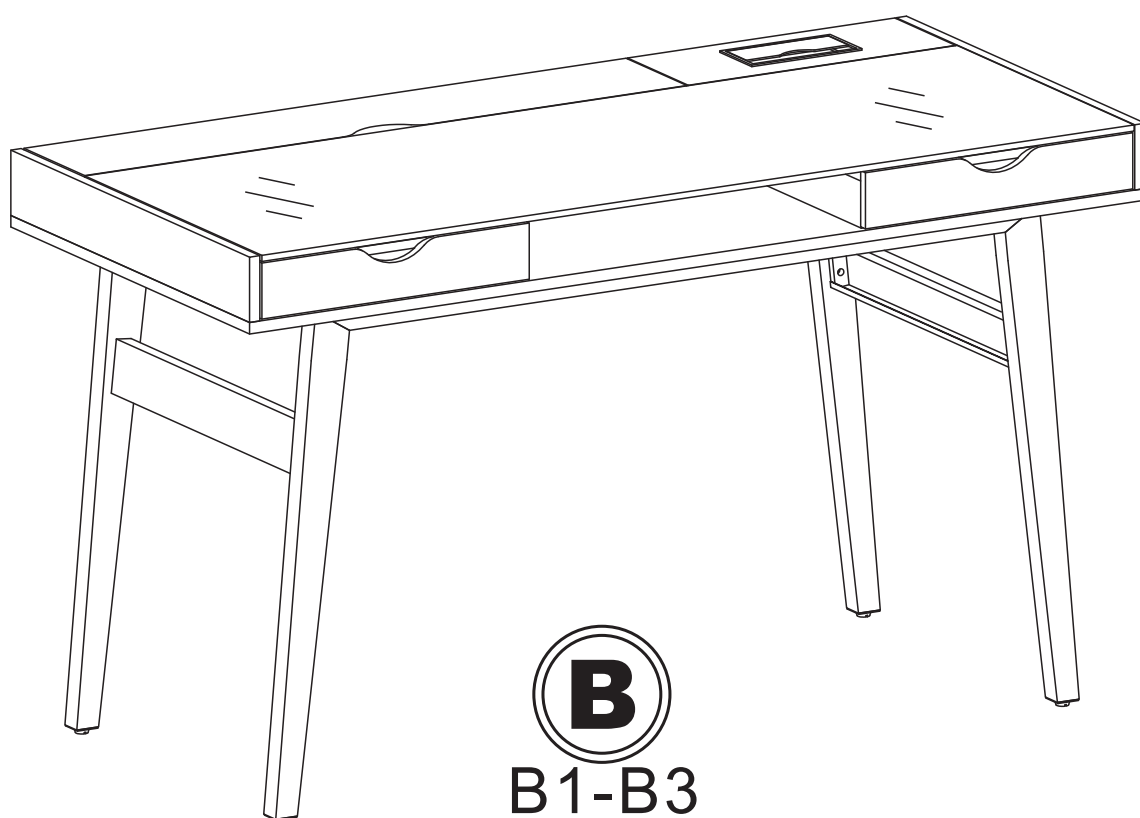
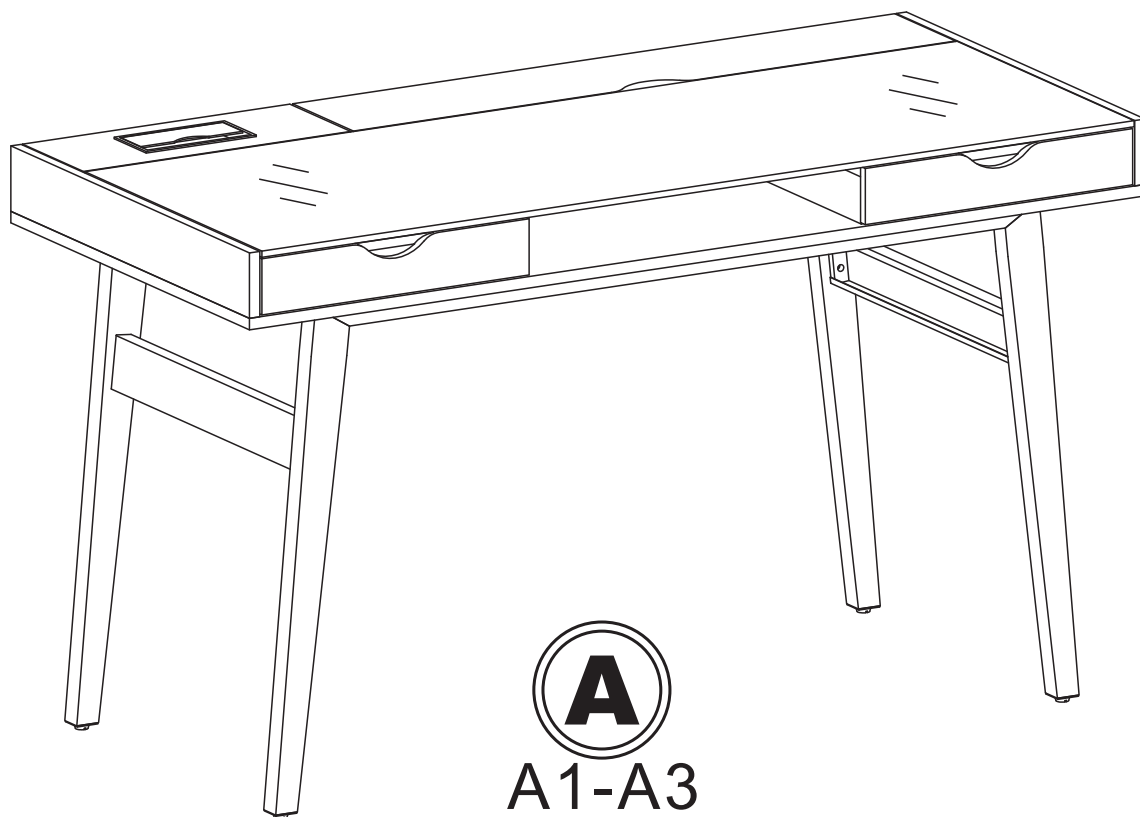
# PASO 6



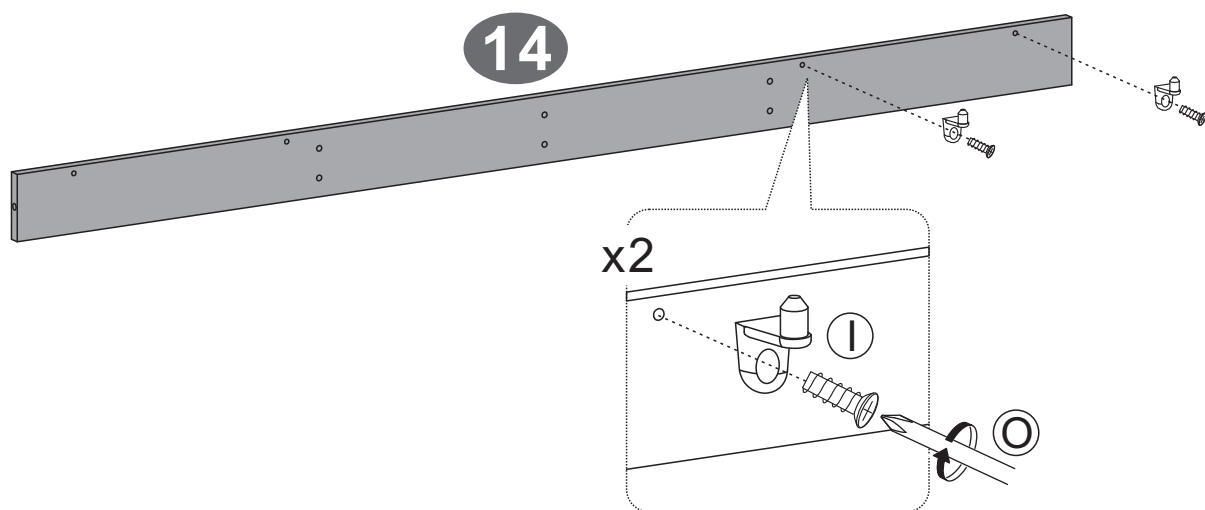
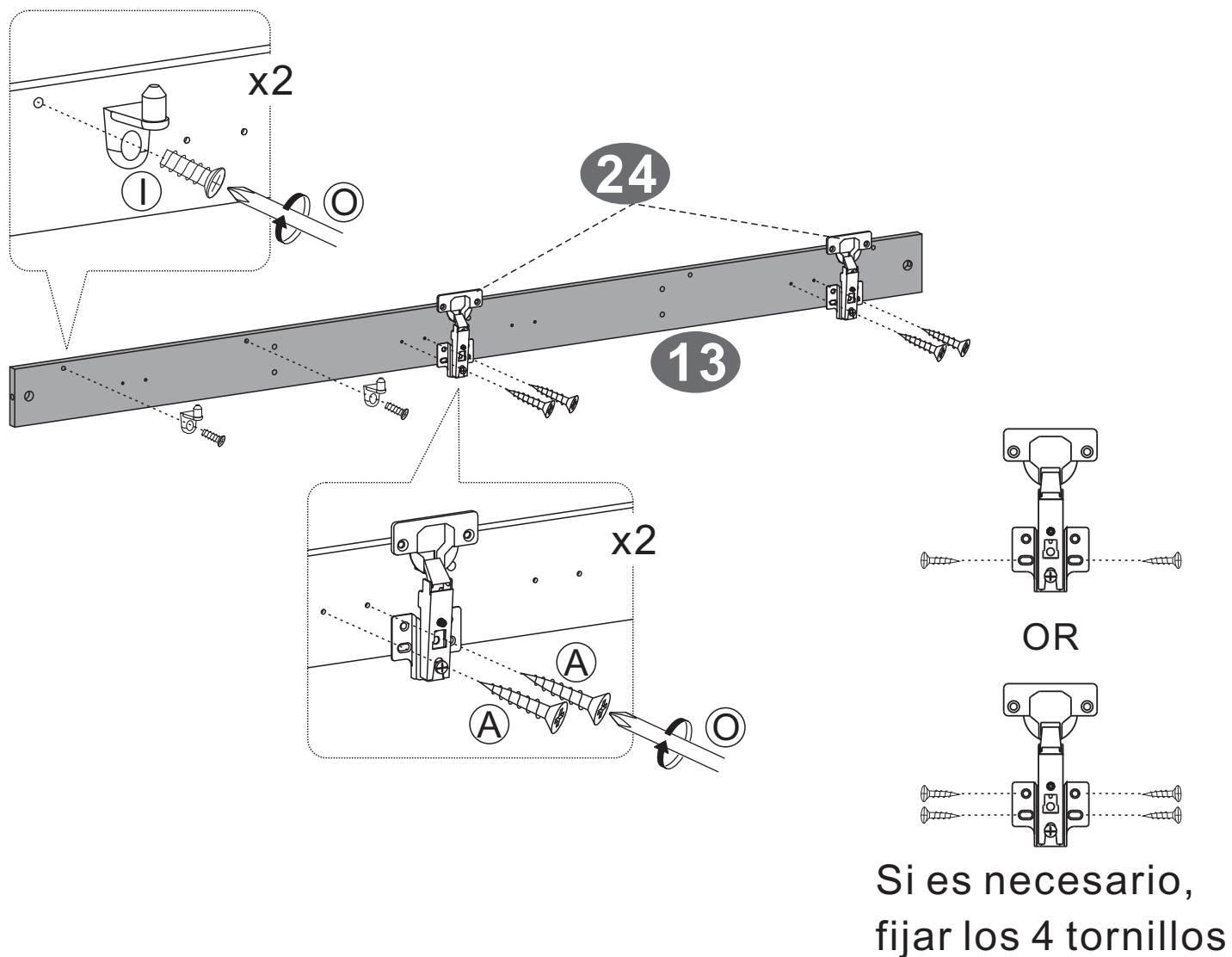
# PASO 7



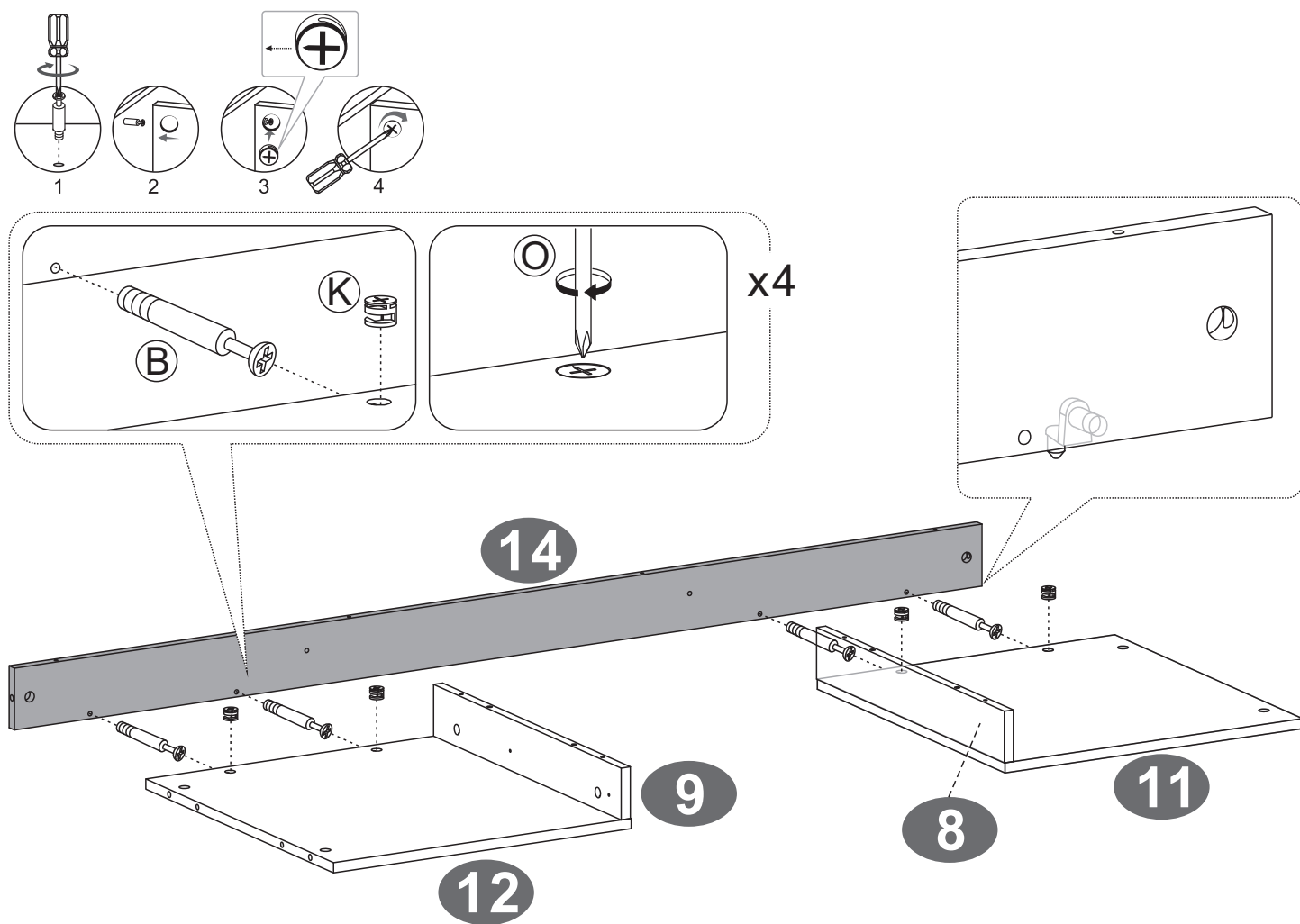
**\*\*Debajo encontrará dos formas de montar el escritorio de acuerdo a su preferencia**



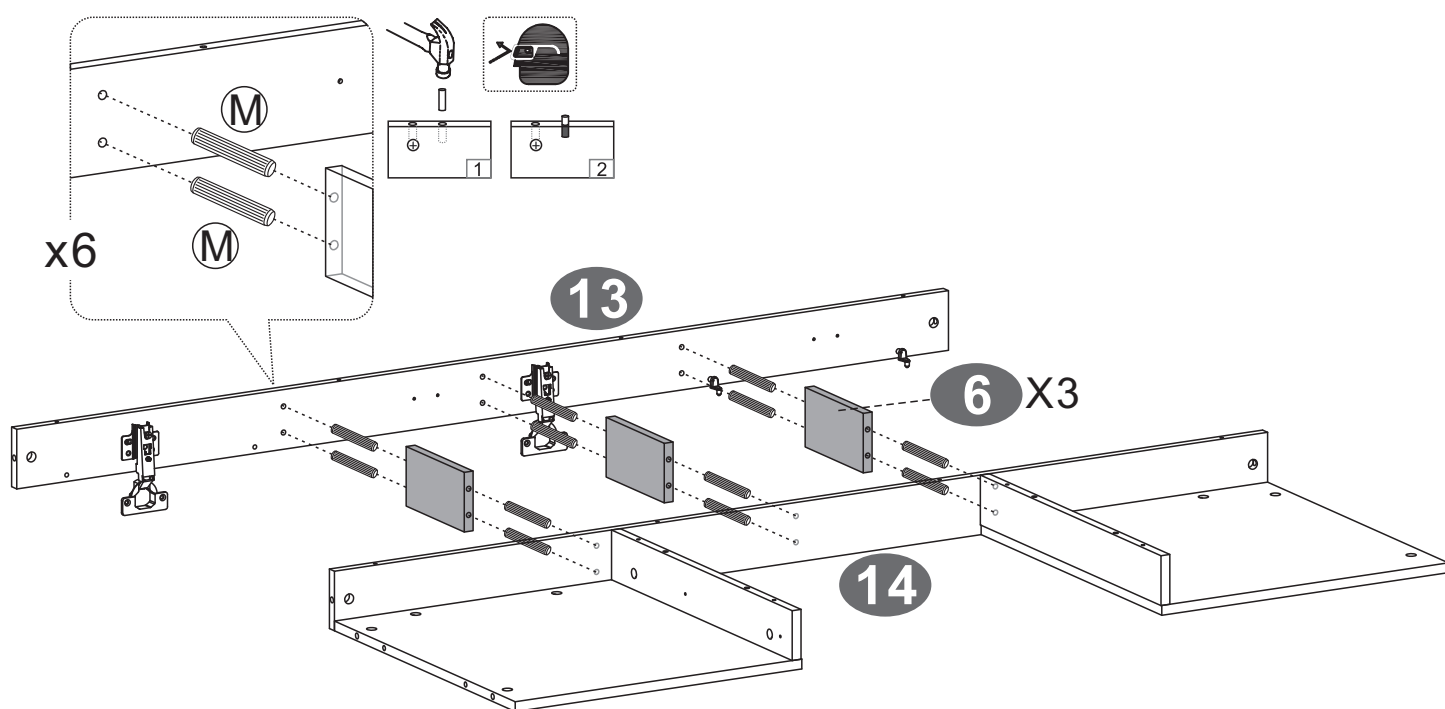
# PASO A1



# PASO A2



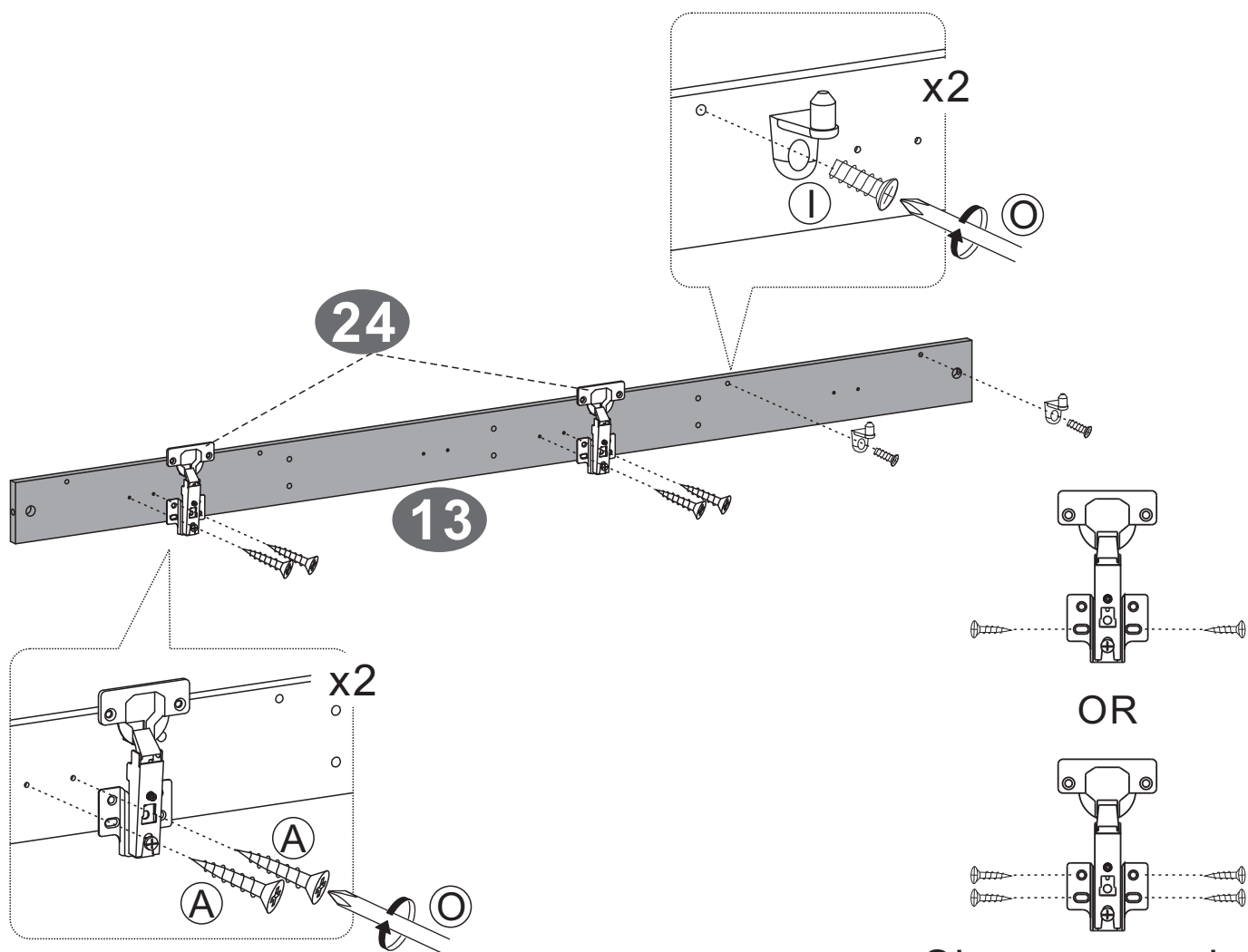
## PASO A3



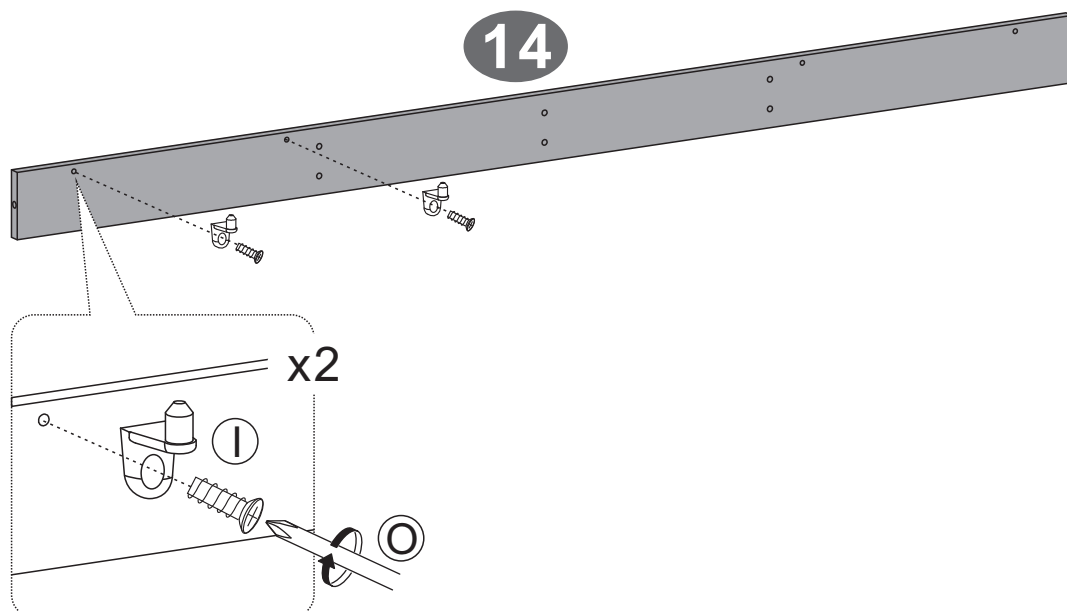
Ir a paso 8 para continuar con la instalación



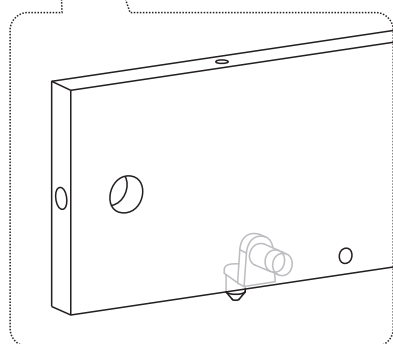
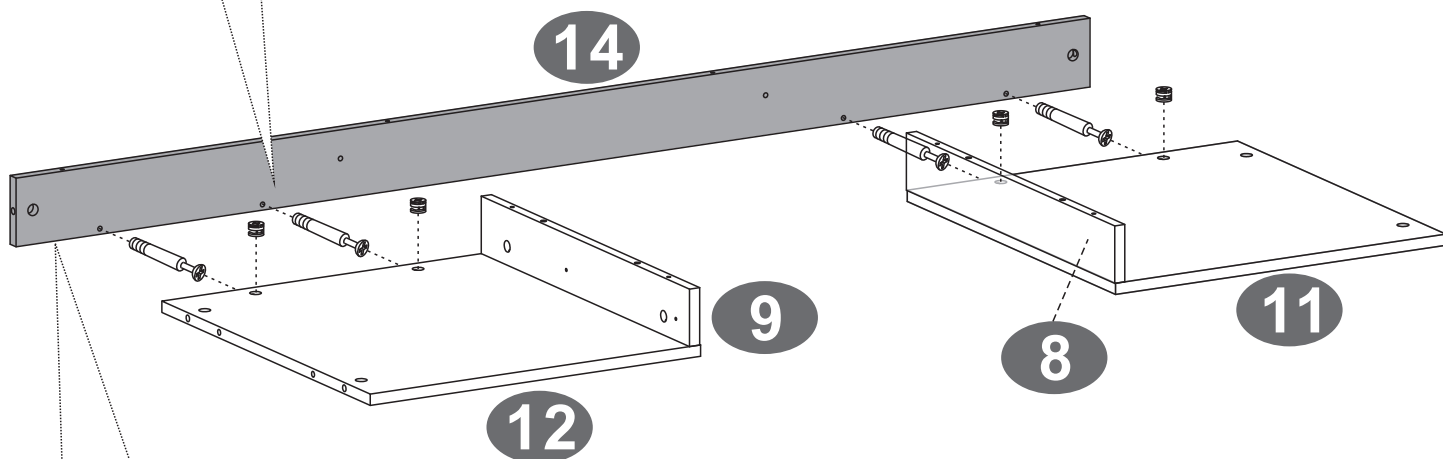
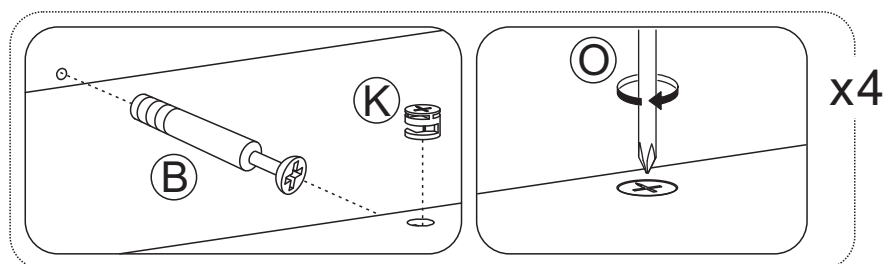
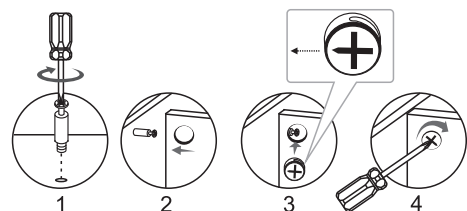
## PASO B1



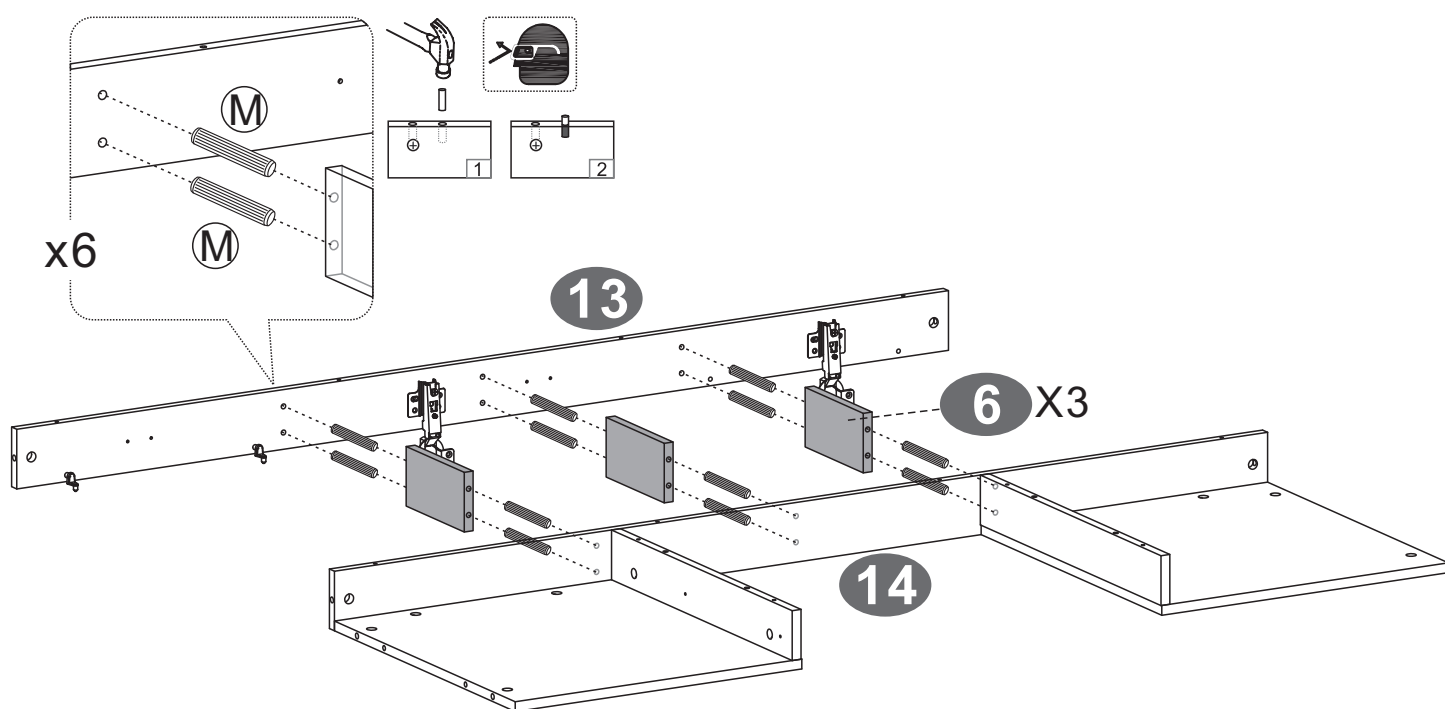
Si es necesario,  
fijar los 4 tornillos



# PASO B2

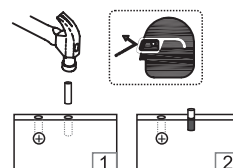
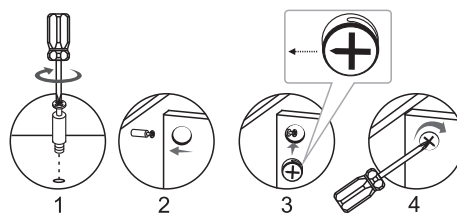
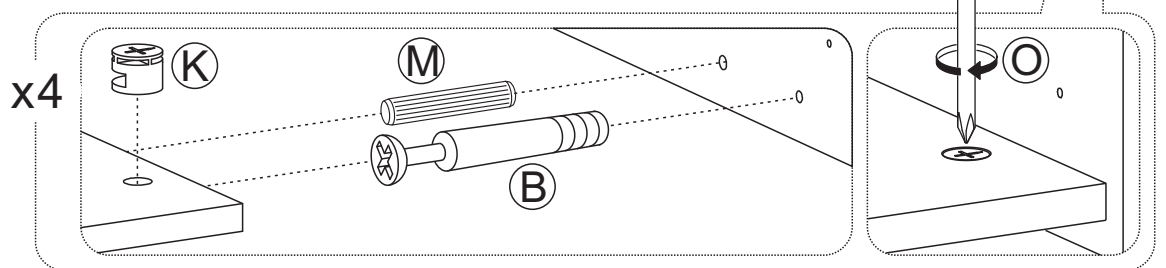
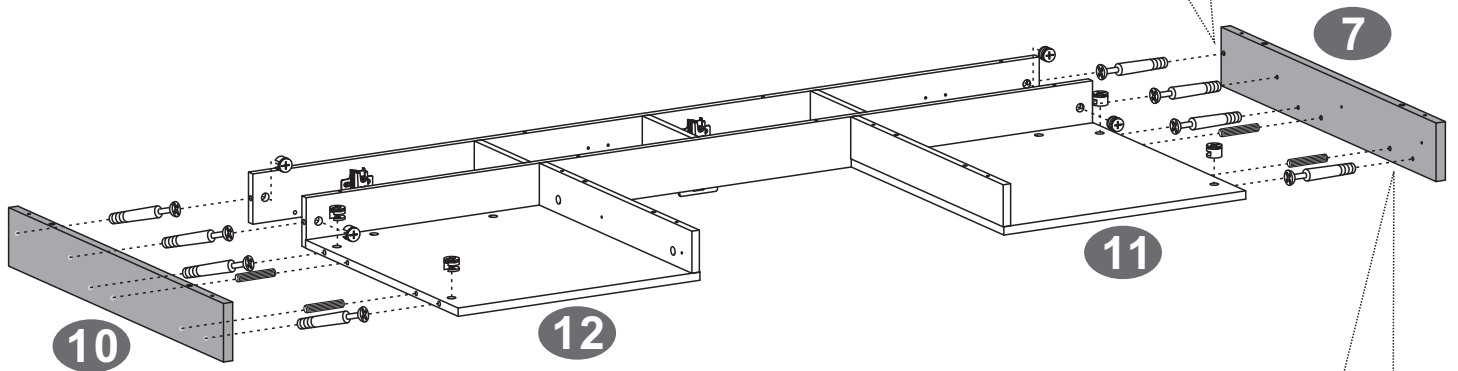
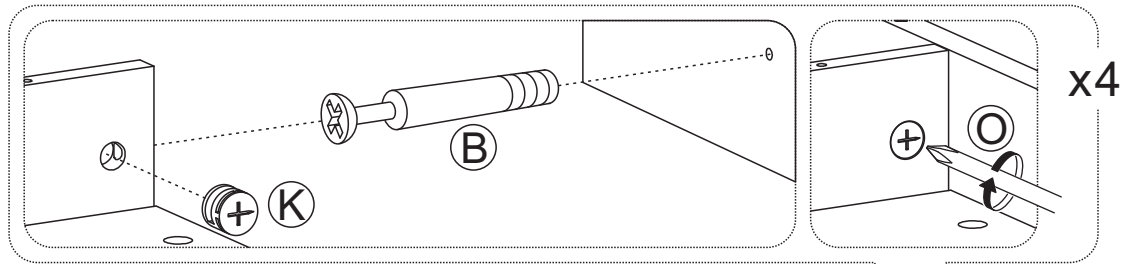
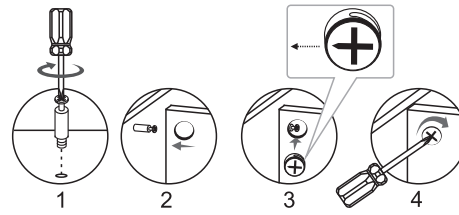


## PASO B3

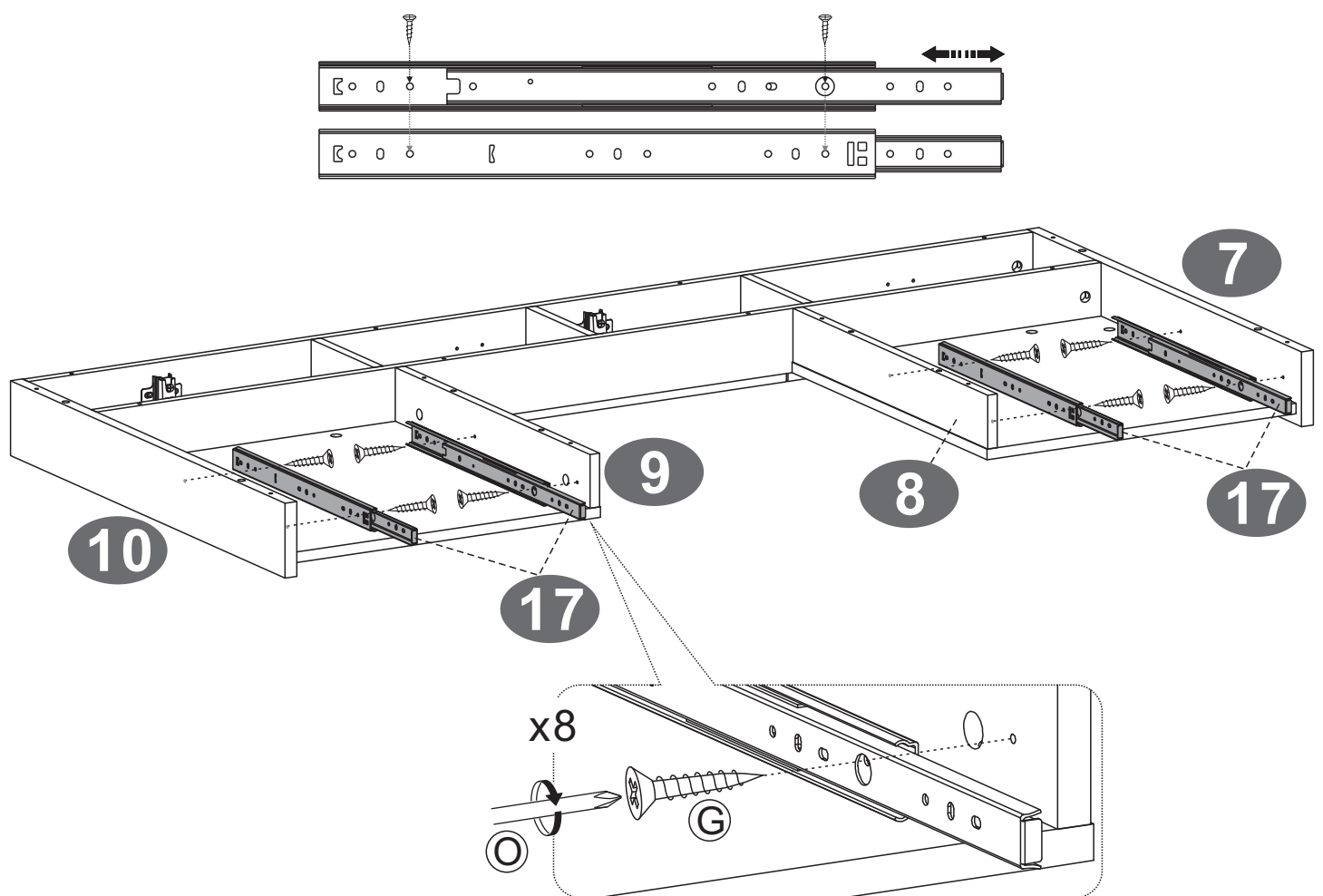


Ir a paso 8 para continuar con la instalación

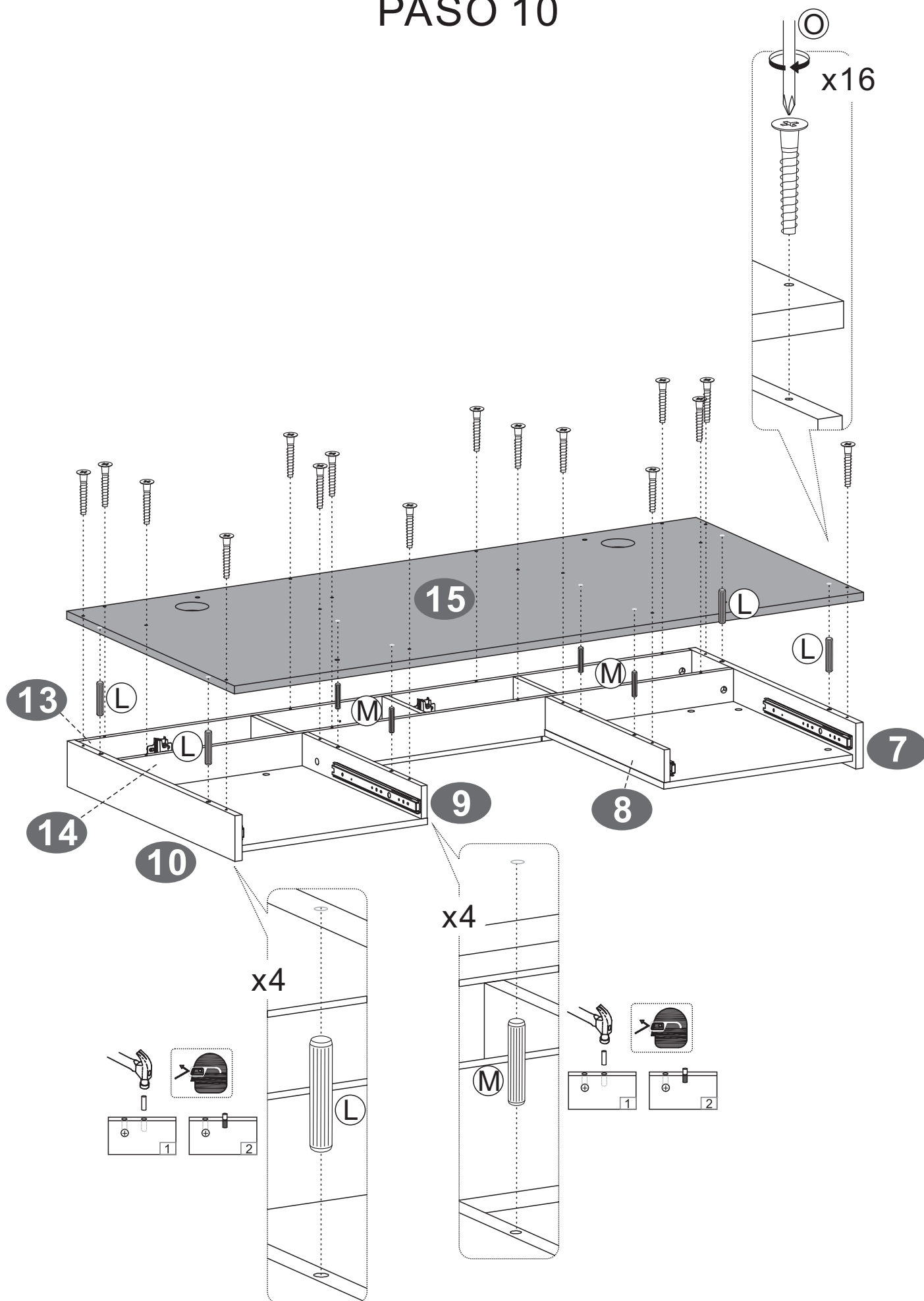
# PASO 8



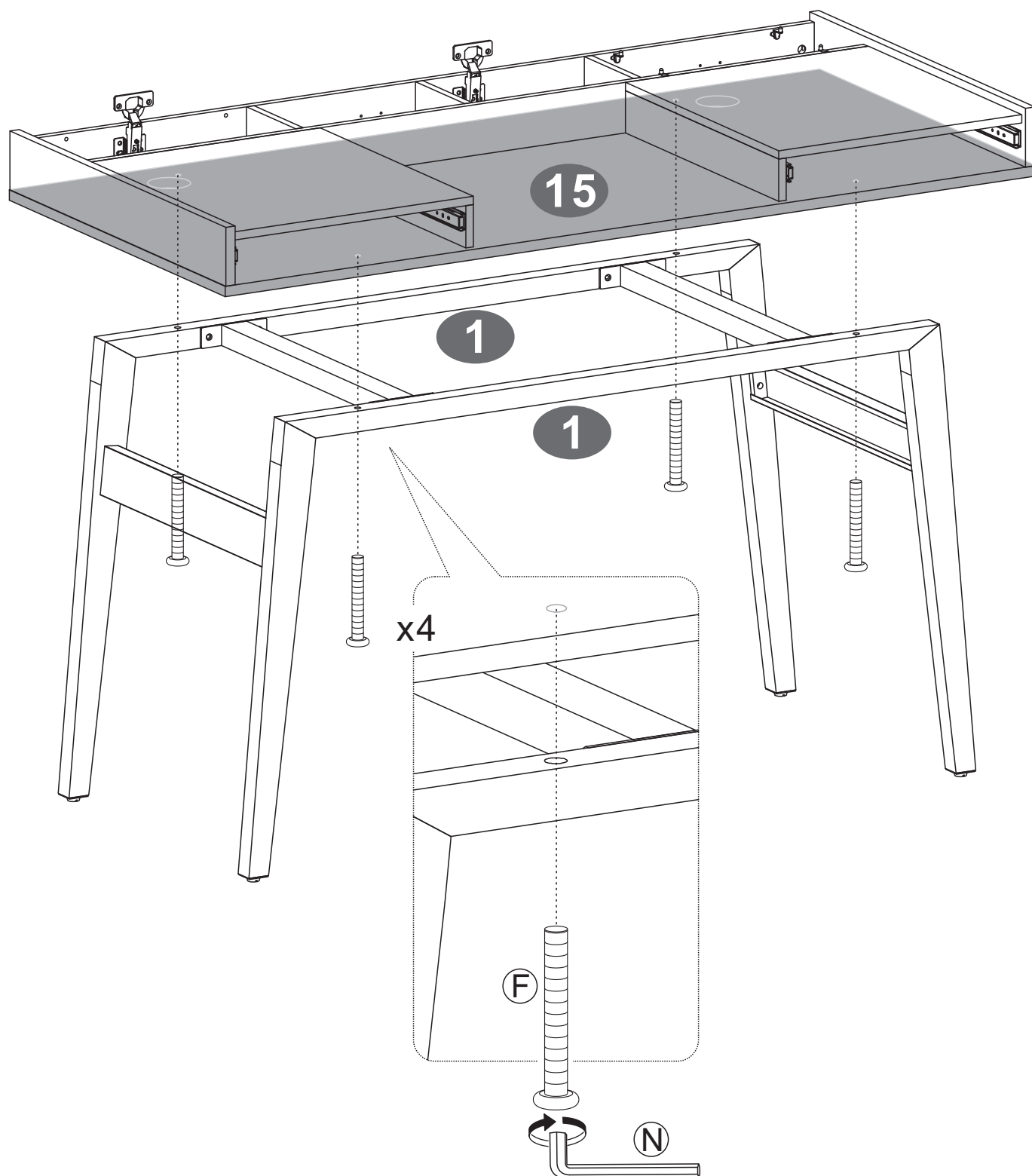
# PASO 9



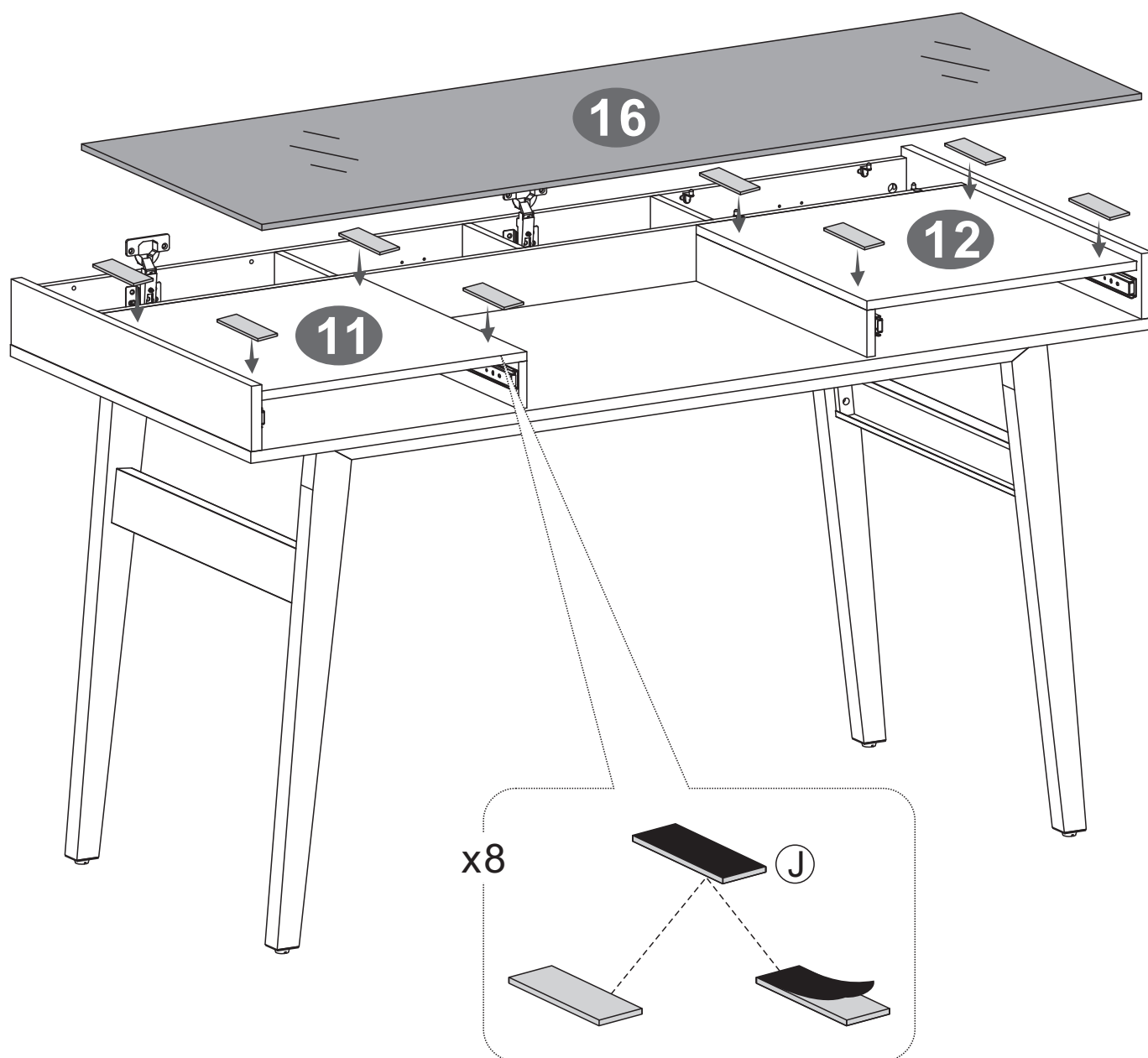
# PASO 10



# PASO 11

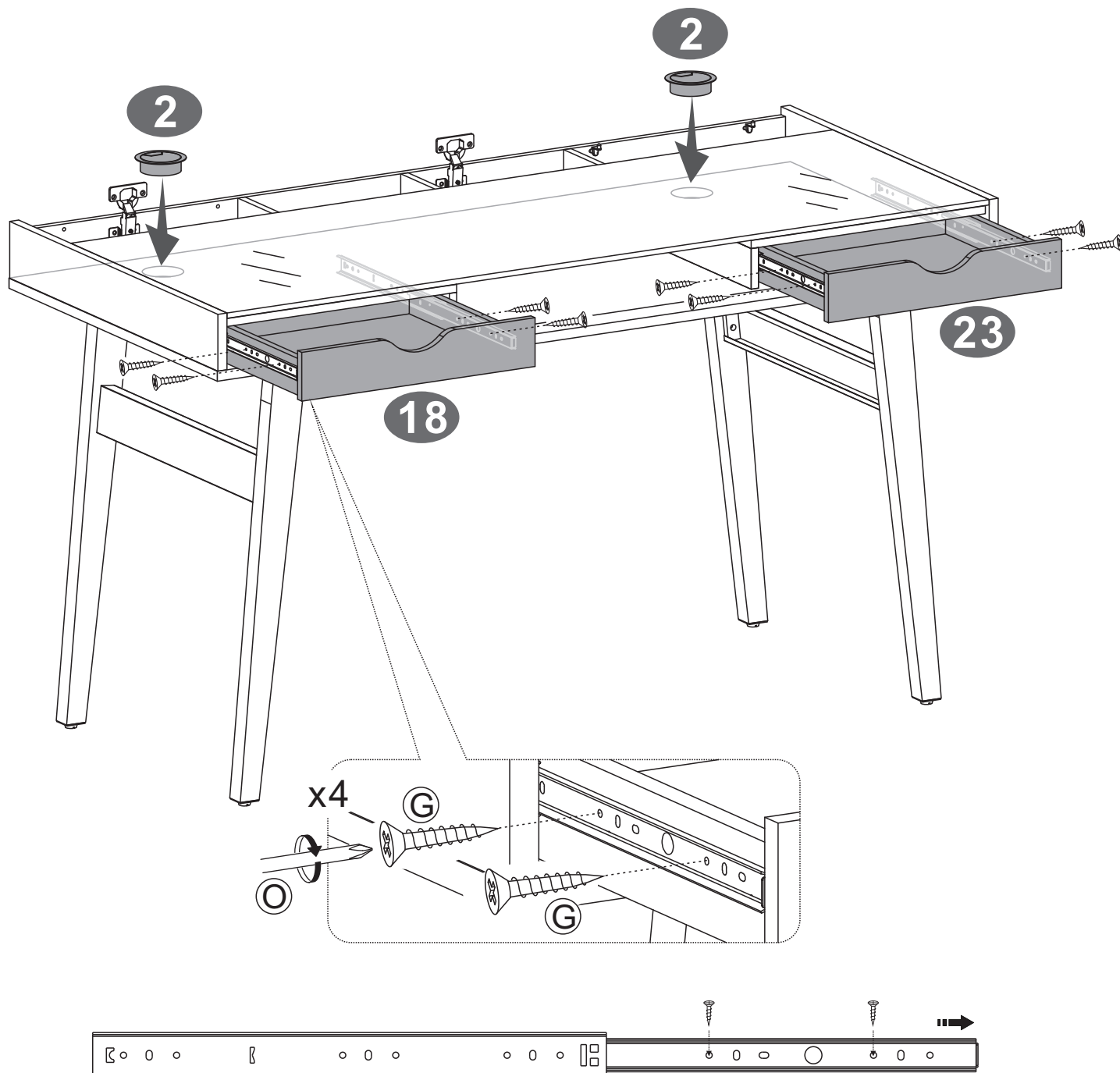


## PASO 12

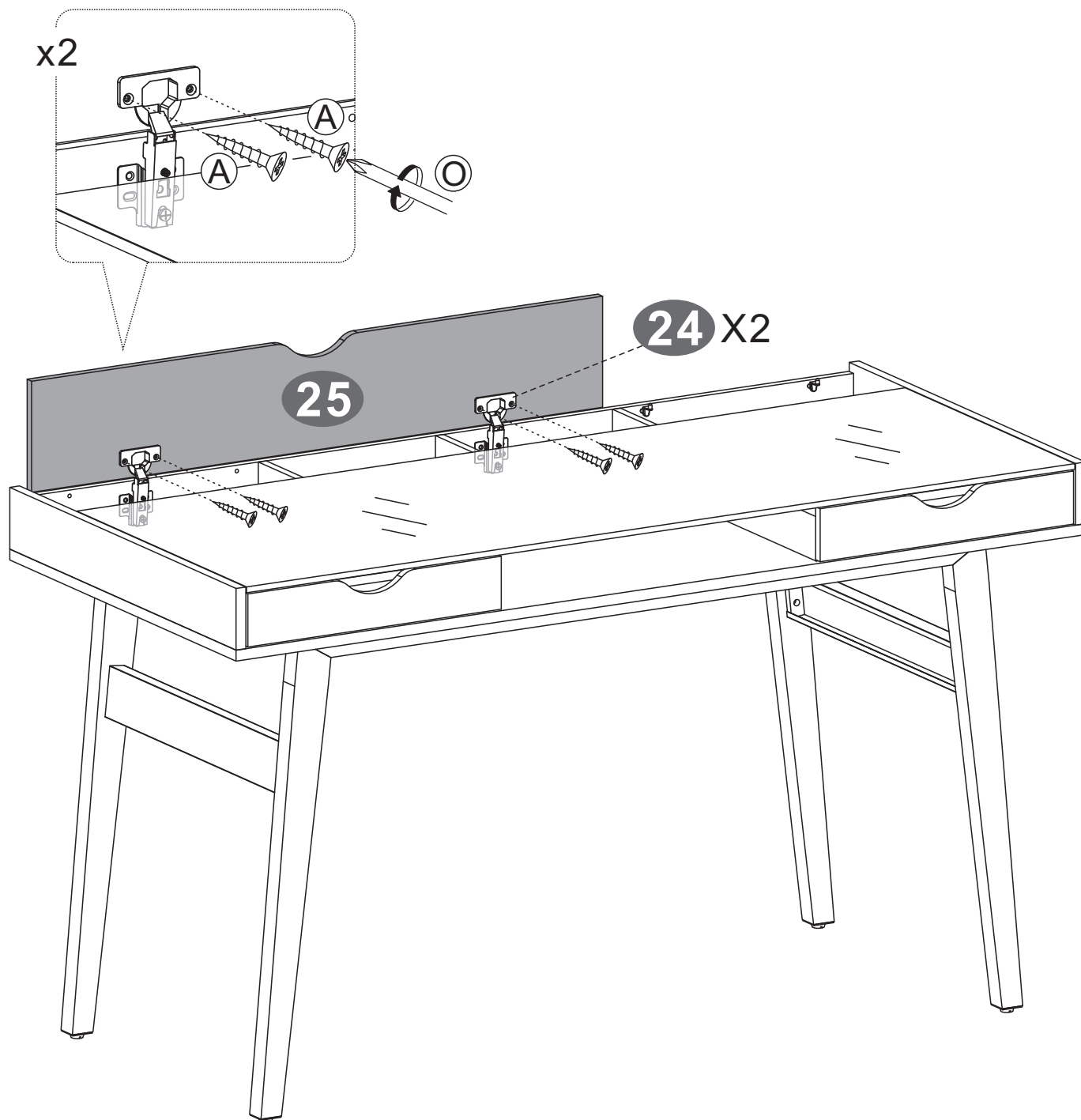




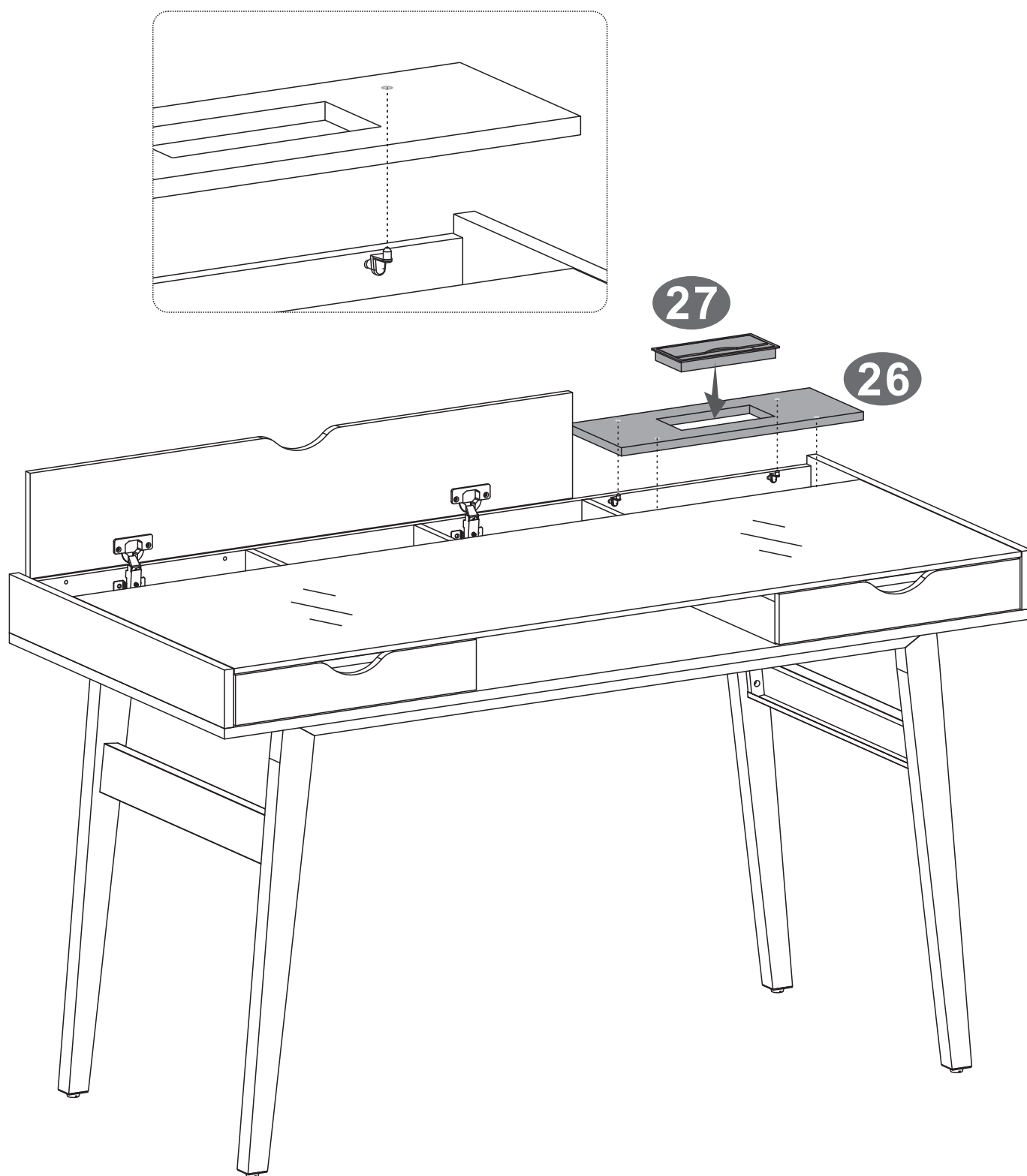
# PASO 13



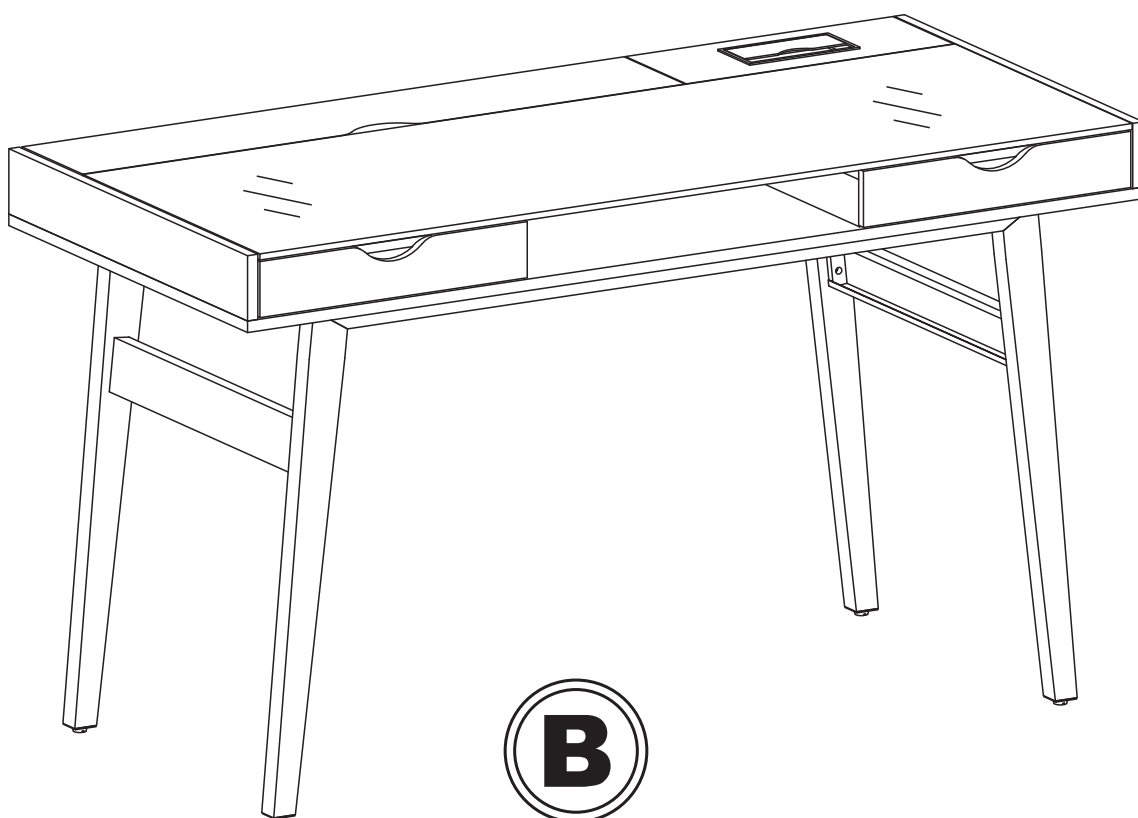
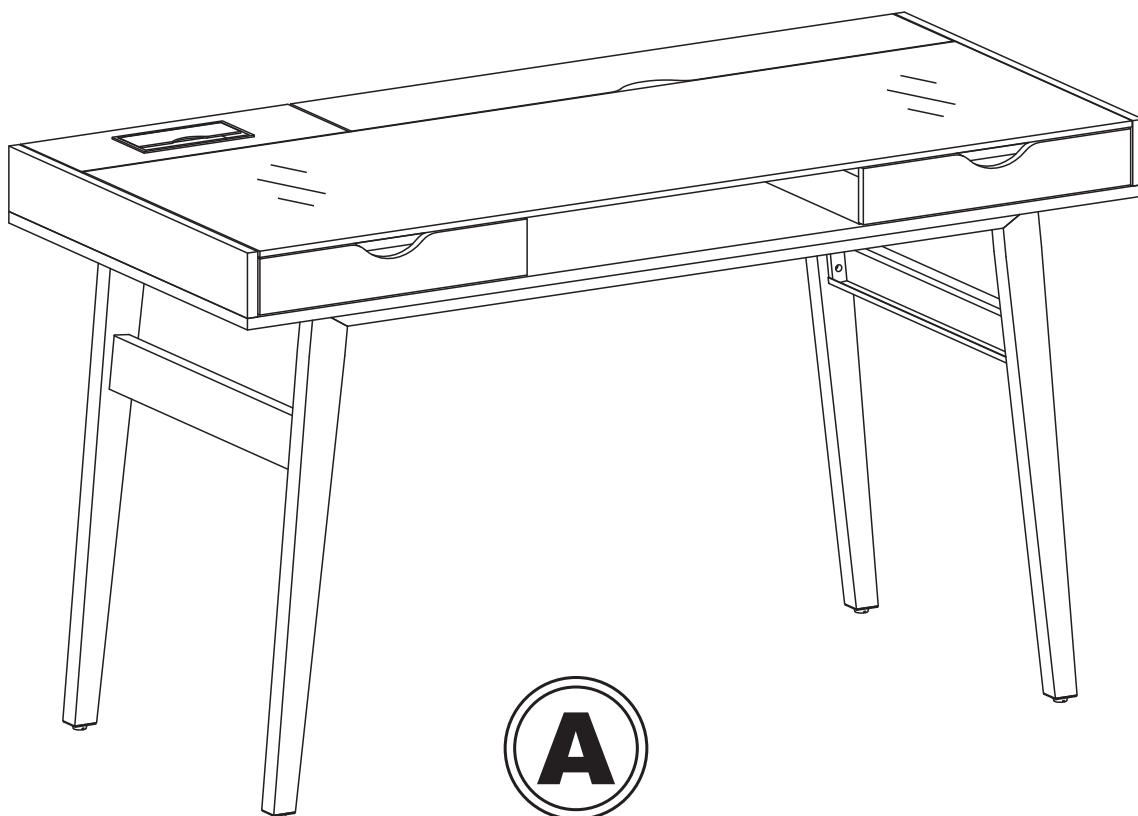
## PASO 14



## PASO 15



## PASO 16





## **TODOS JUNTOS**

Entre todos sí es posible  
lograr un impacto real  
ahorrando papel.

