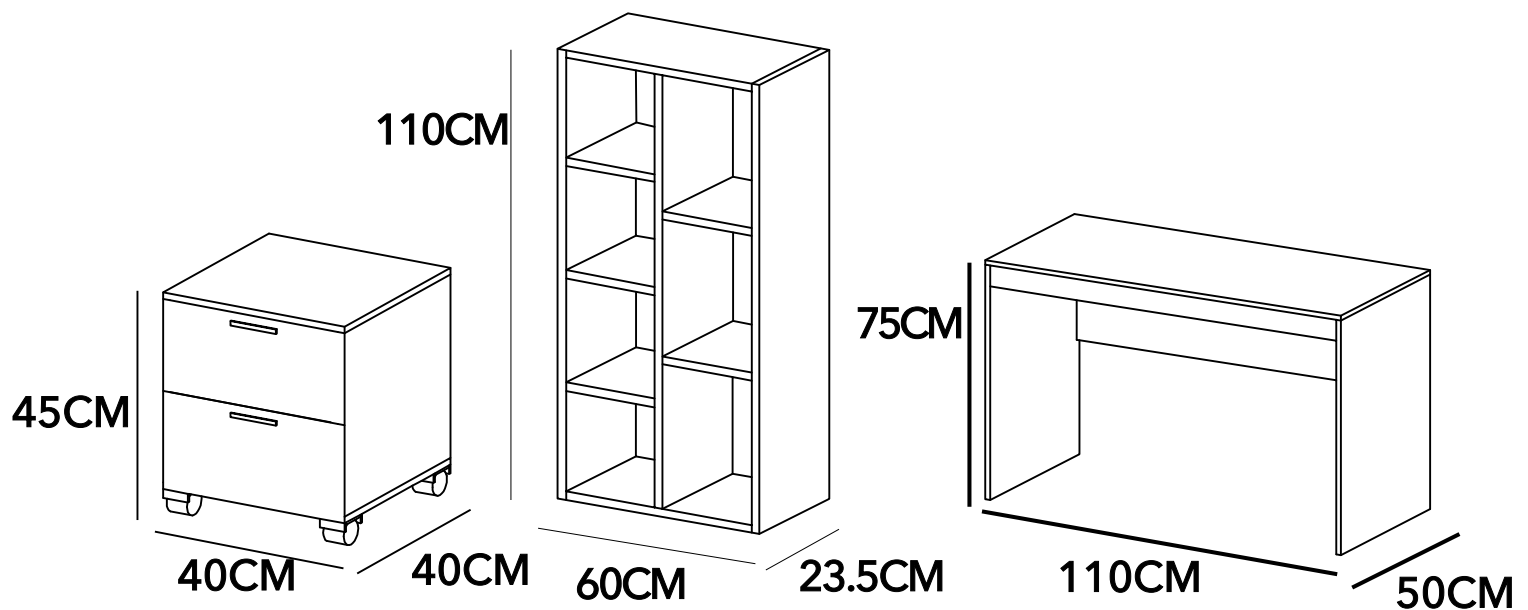


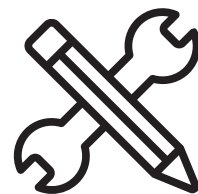


MANUAL DE INSTRUCCIONES

ESCRIT110X50X75 LIBRER2N Y CAJON2C CENIZ
MODELO: MB0624STT19-2-1

ESCRIT110X50X75 LIBRER 2N Y CAJON 2C BCO
MODELO: MB0624STT19-2-2





ADVERTENCIA

Siga las instrucciones que se detallan en el manual, si presenta alguna diferencia en el contenido de sus piezas pongase en contacto con la tienda donde fue adquirido.

RECOMENDACIONES

- Estudie atentamente las instrucciones antes del montaje.
- Ordene las piezas que componen el mueble.
- Agrupe y ordene la quincallería.
- Prepare una zona despejada para el montaje.
- Monte las piezas sin forzar los ensambles, una vez armada toda la estructura, reaprete de forma definitiva.
- Volver a apretar los tornillos después de un tiempo de uso.
- Conserve estas instrucciones de montaje.



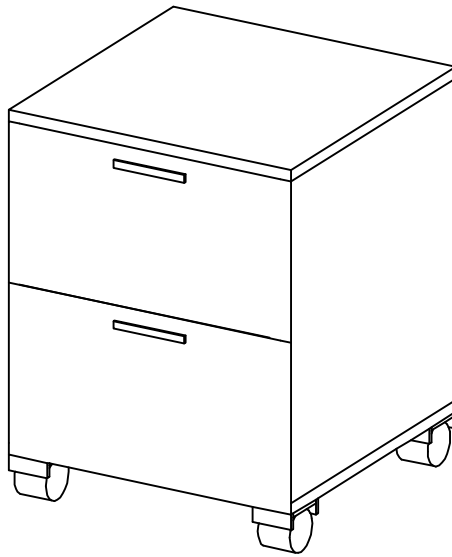
Herramientas requeridas
(no incluidas)



1 persona para
el armado



Producto contenido
en 3 cajas



QUINCALLERÍA



Ax12



Ax12

30mm



Cx8

30mm

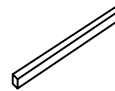


Dx8

12mm

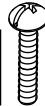


Ex36



Fx2

18mm

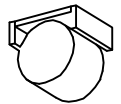


Gx4

40mm



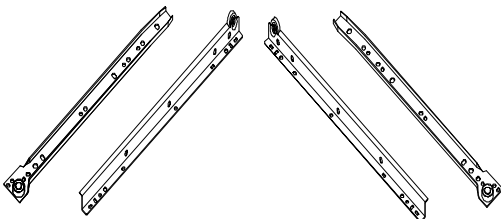
Hx4



Ix4

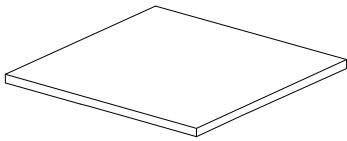


Jx14

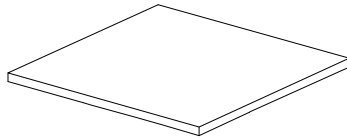


Ox2sets

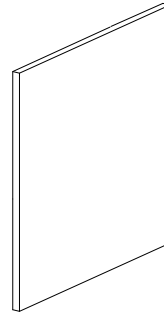
PIEZAS



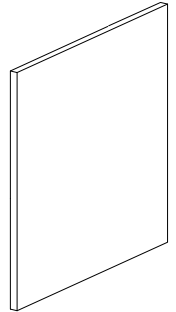
① x1



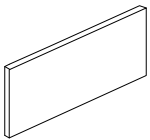
④ x1



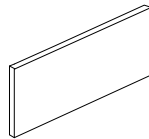
② x1



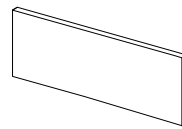
③ x1



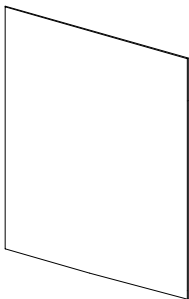
⑦ x2



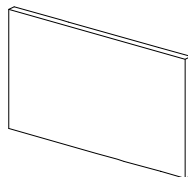
⑧ x2



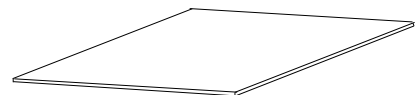
⑨ x2



⑤ x1

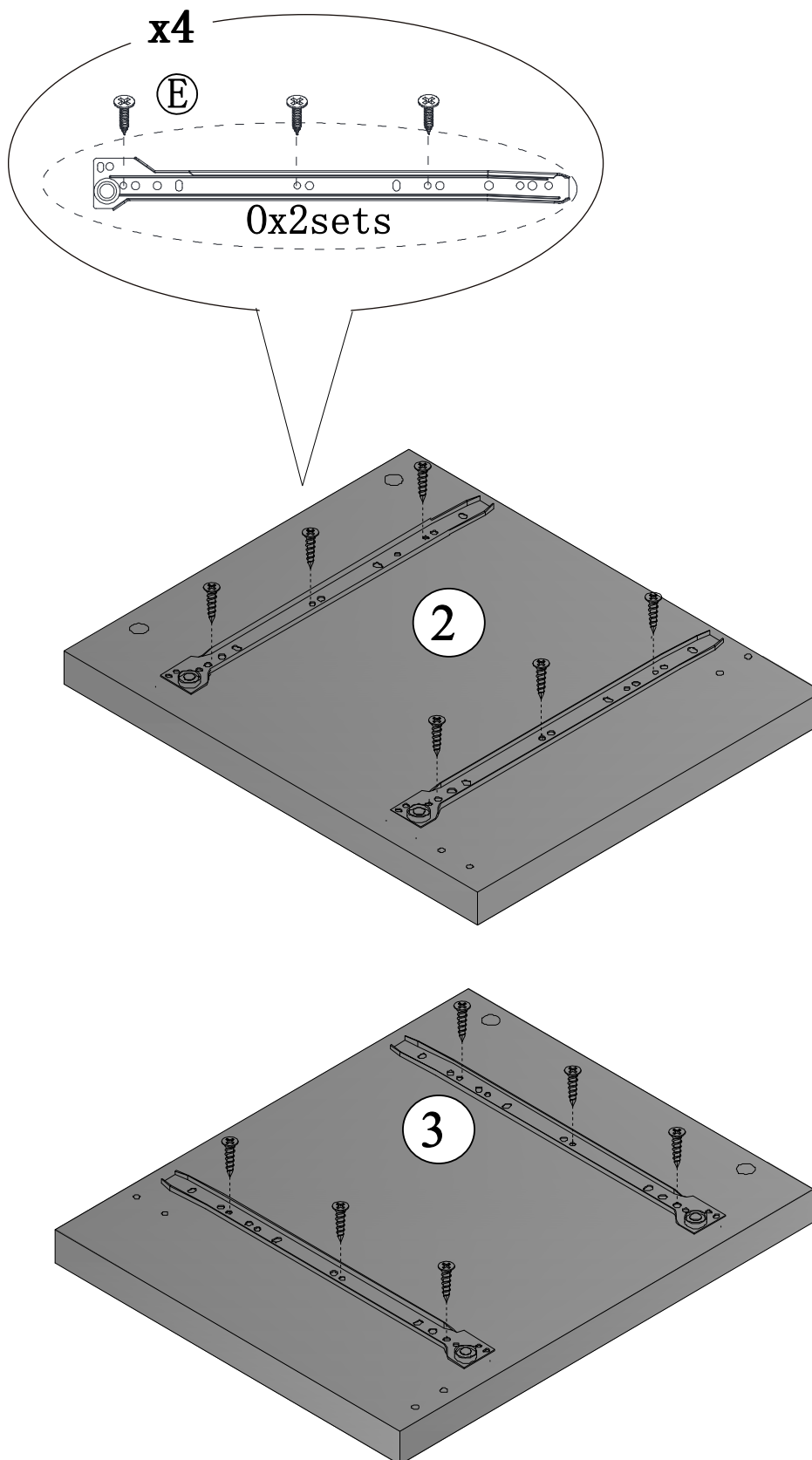


⑥ x2

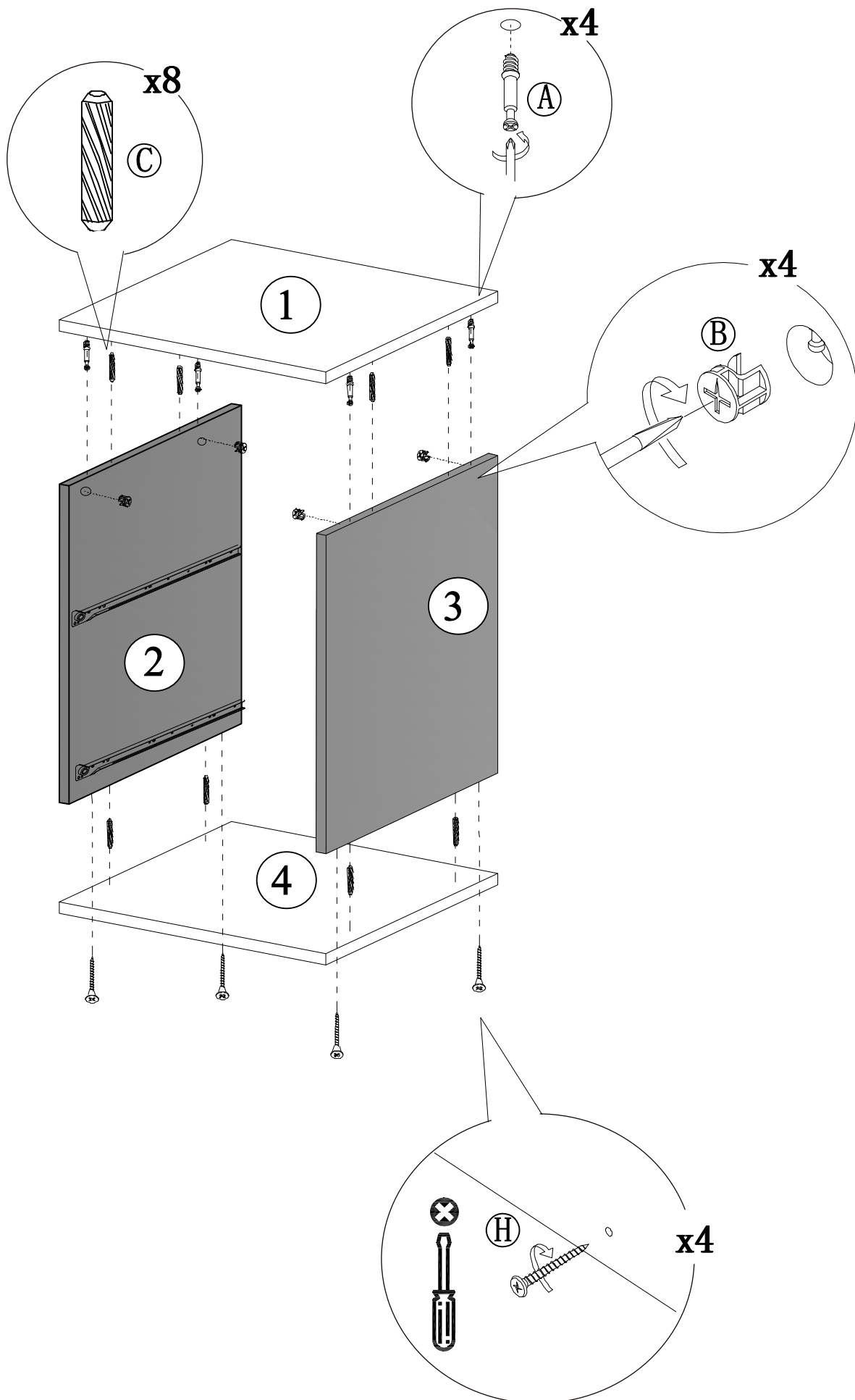


⑩ x2

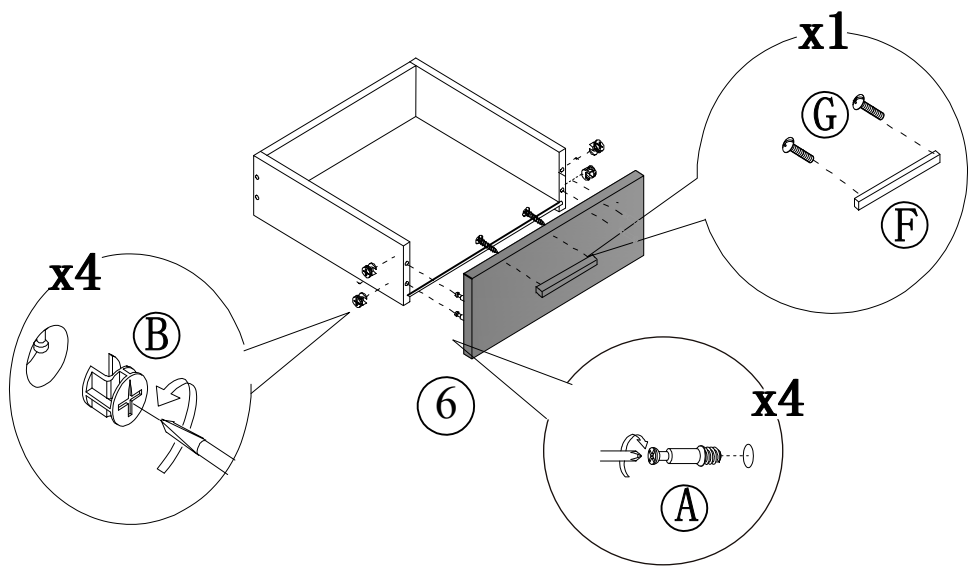
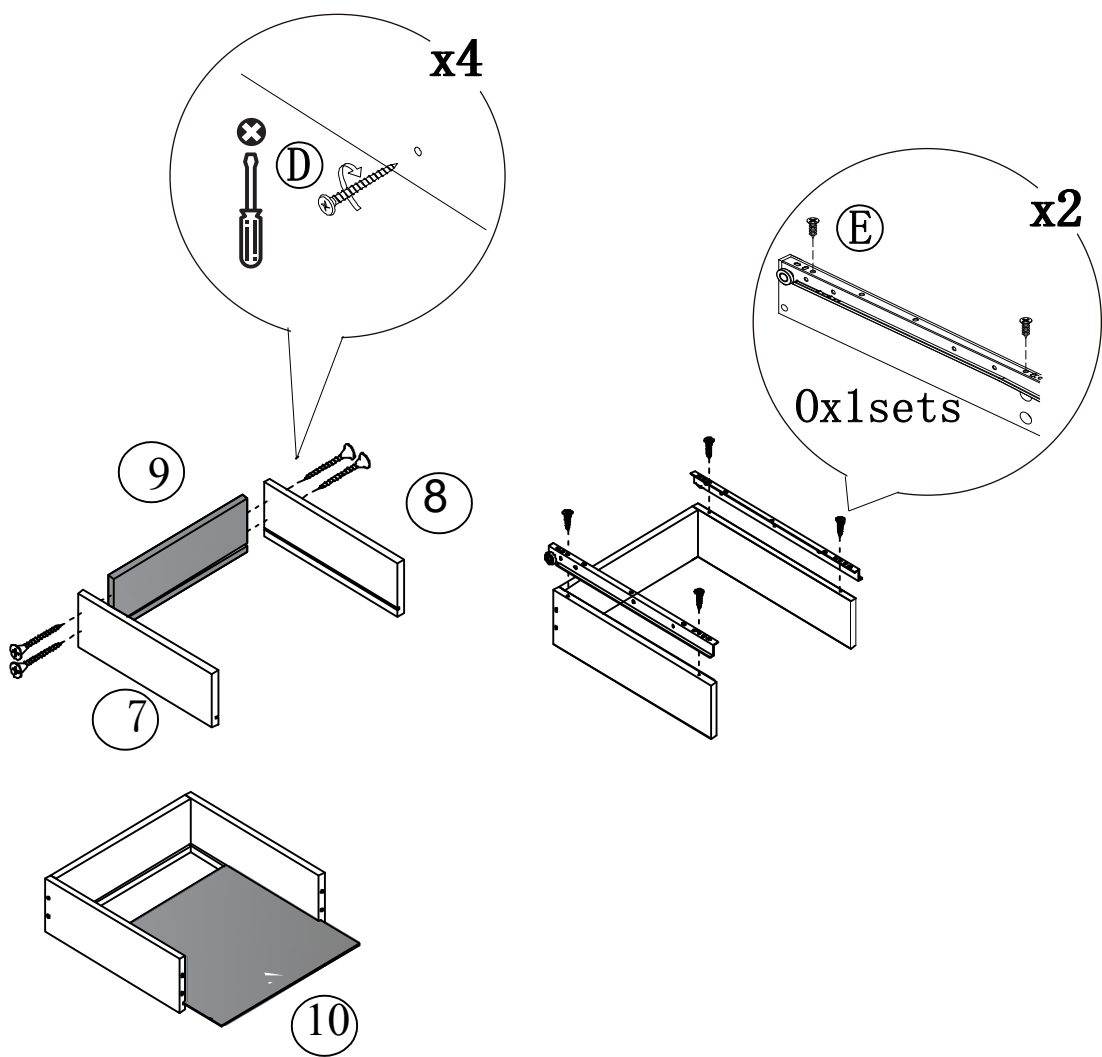
PASO 1



PASO 2

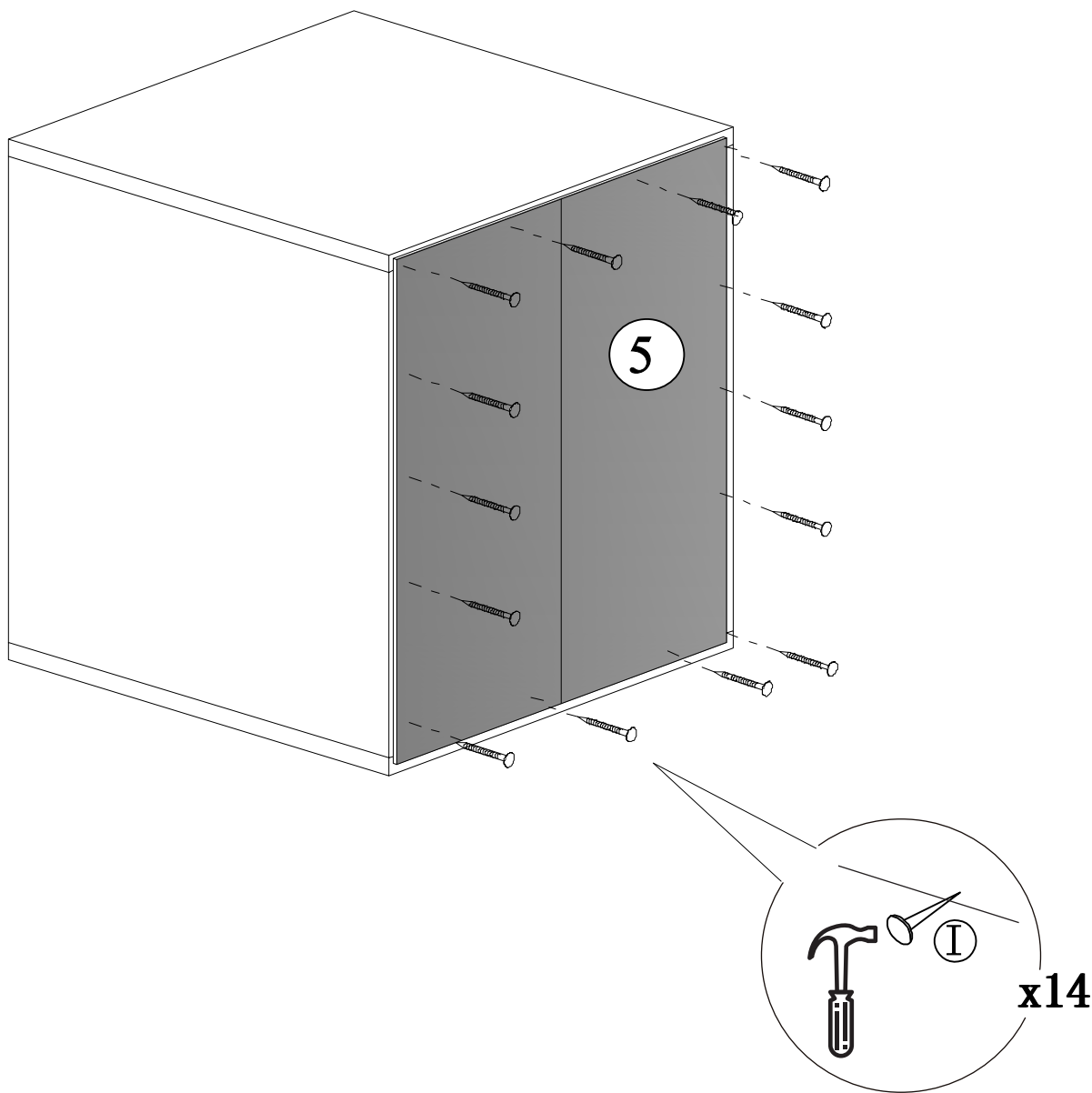


PASO 3

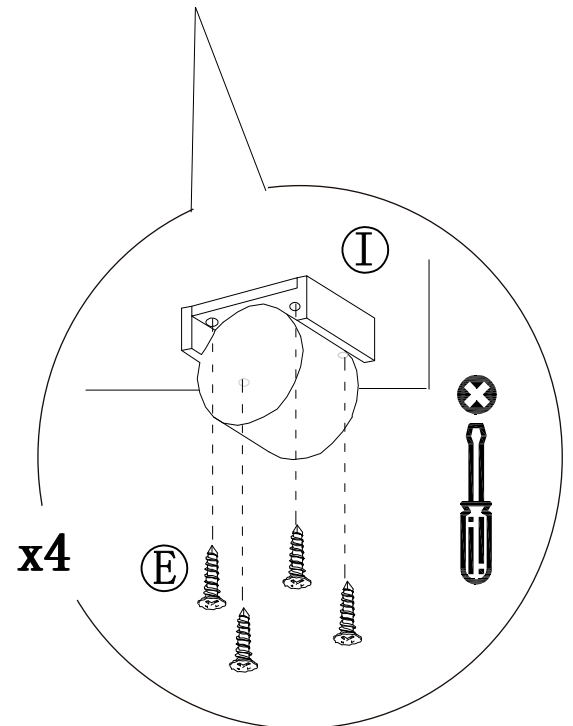
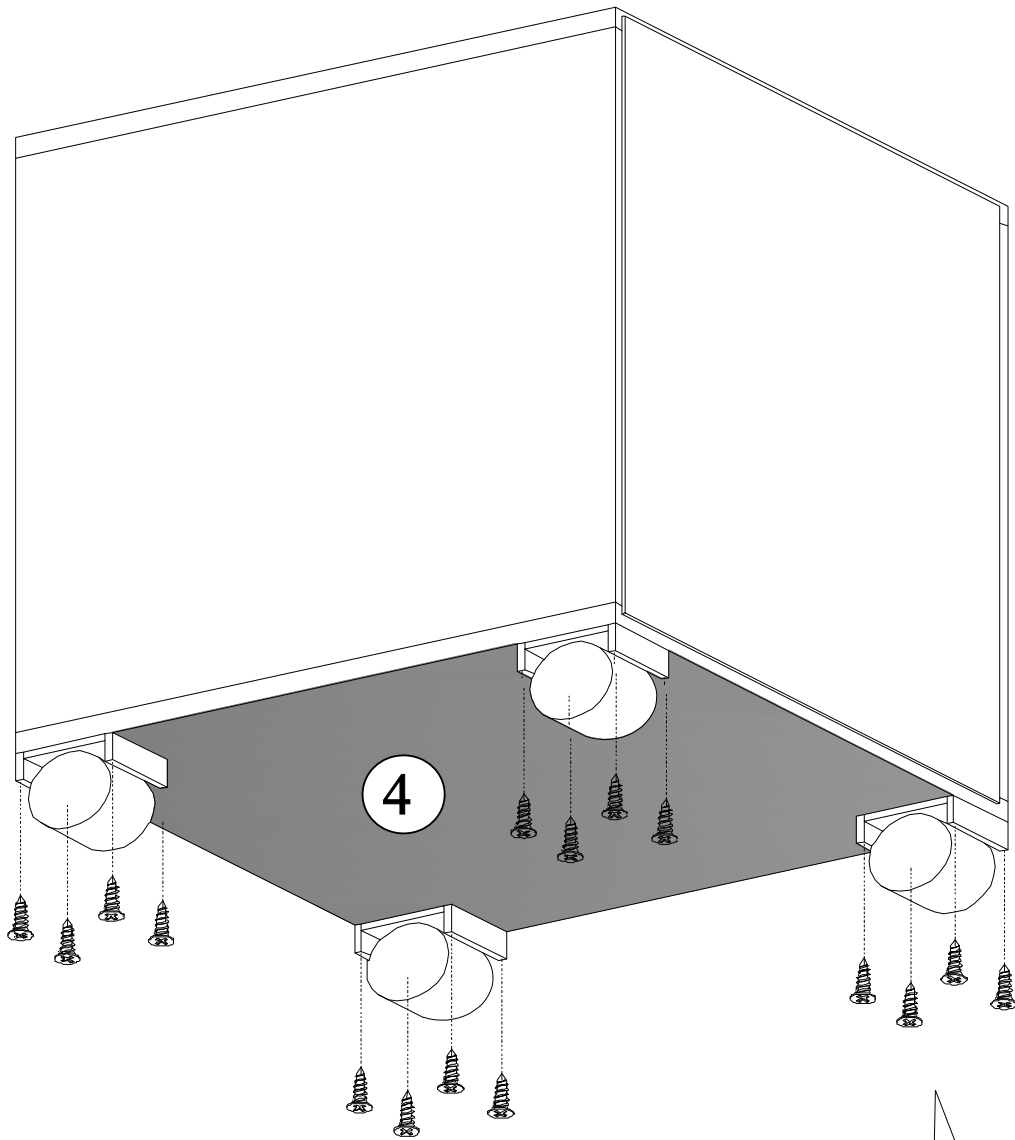


X2

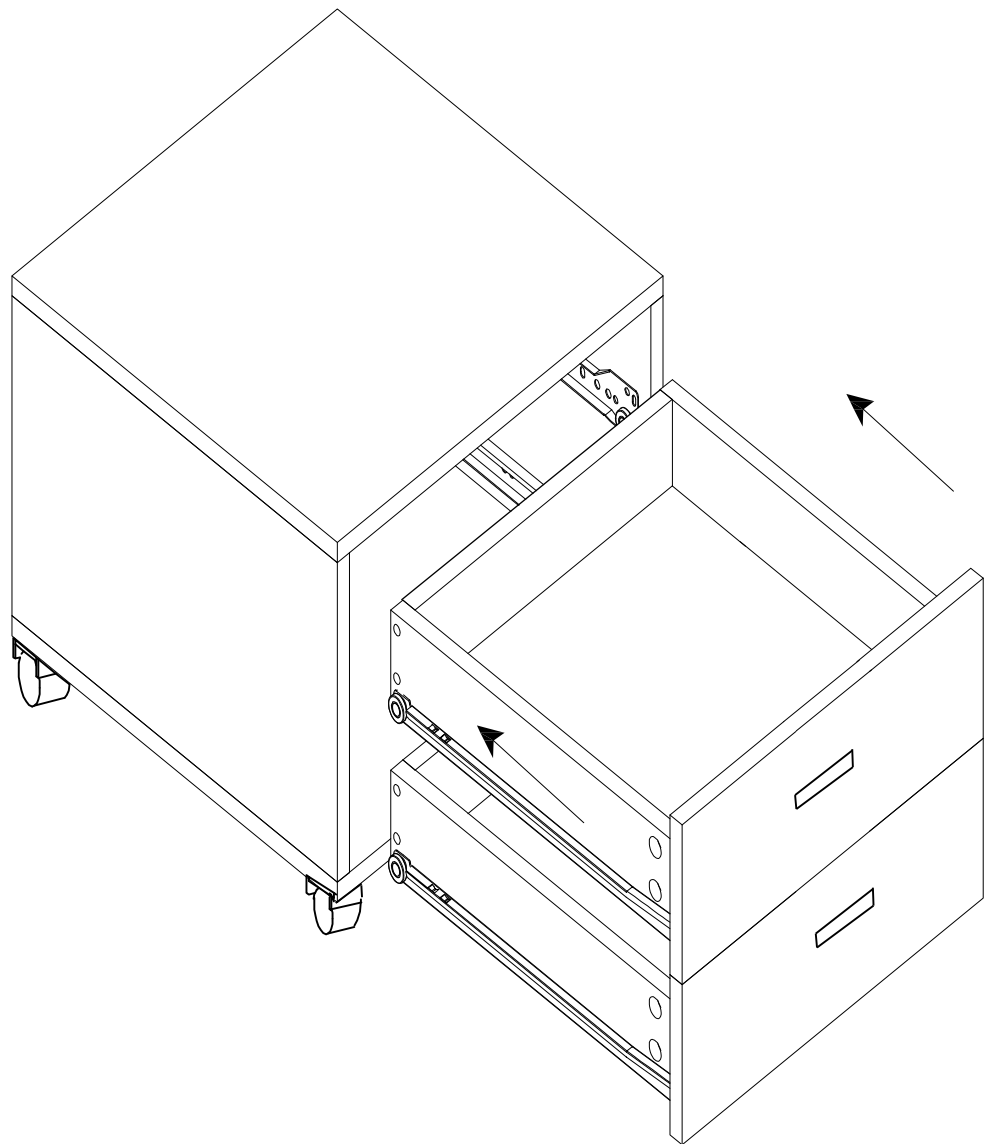
PASO 4

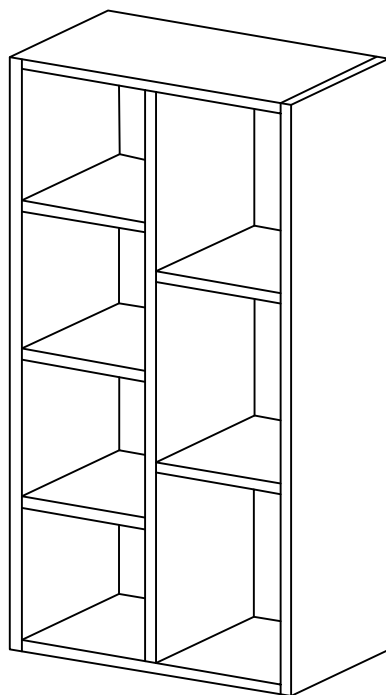


PASO 5



PASO 6





QUINCALLERÍA

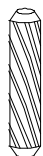


Ax24



Bx24

30mm

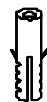
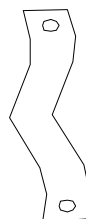


Cx32



Dx24

40mm

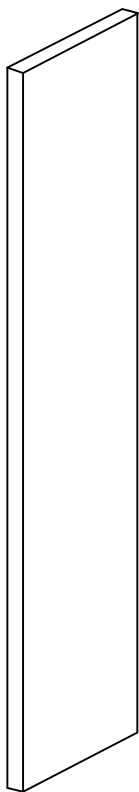


14mm

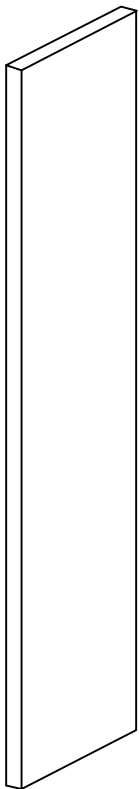


Ex1

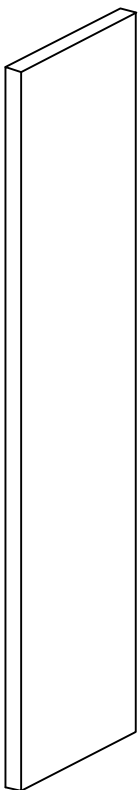
PIEZAS



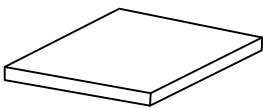
① x1



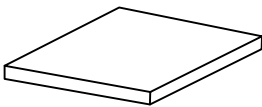
② x1



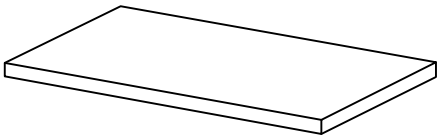
③ x1



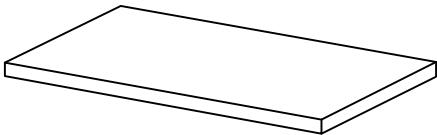
④ x2



⑤ x3

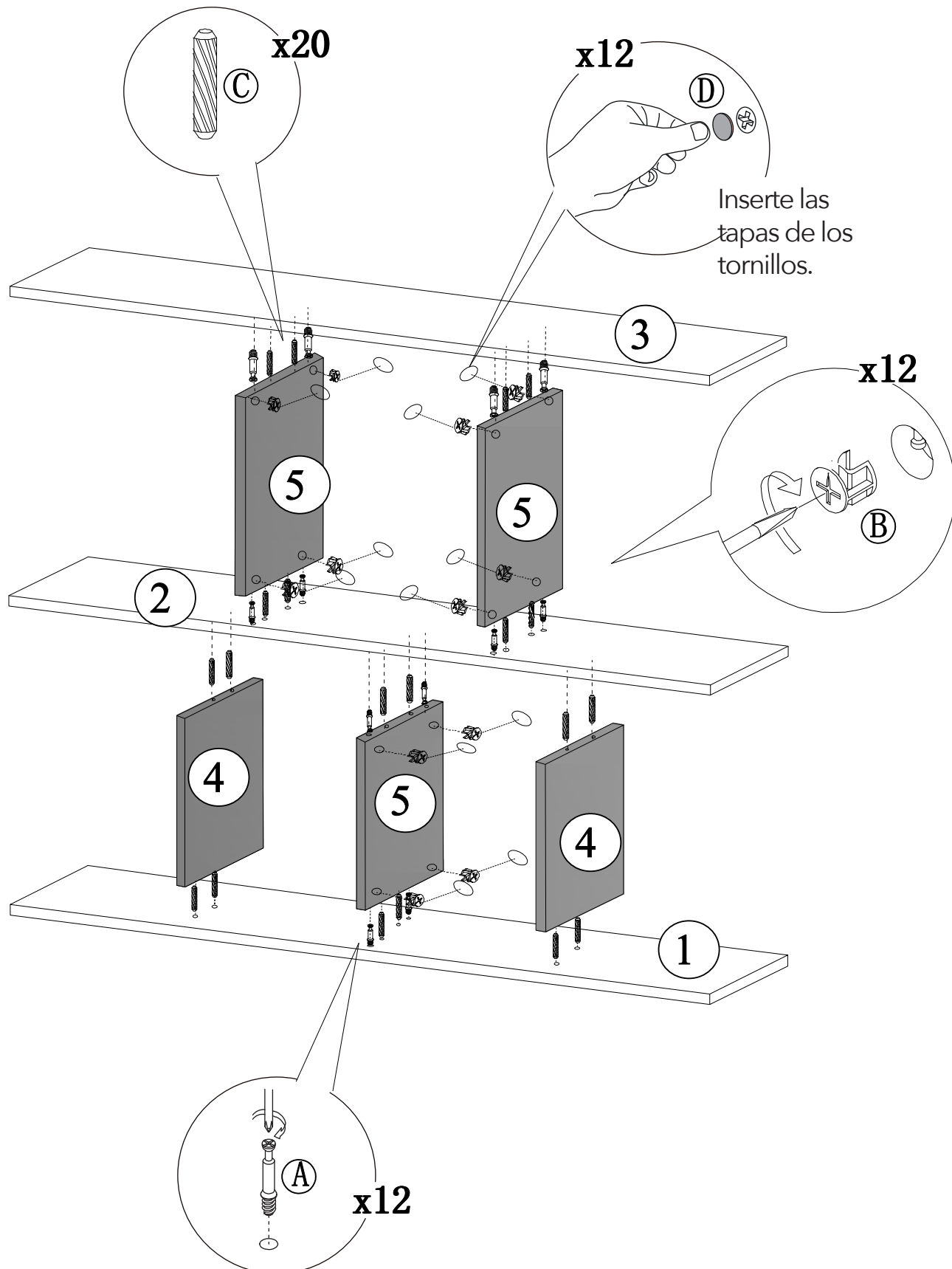


⑥ x1

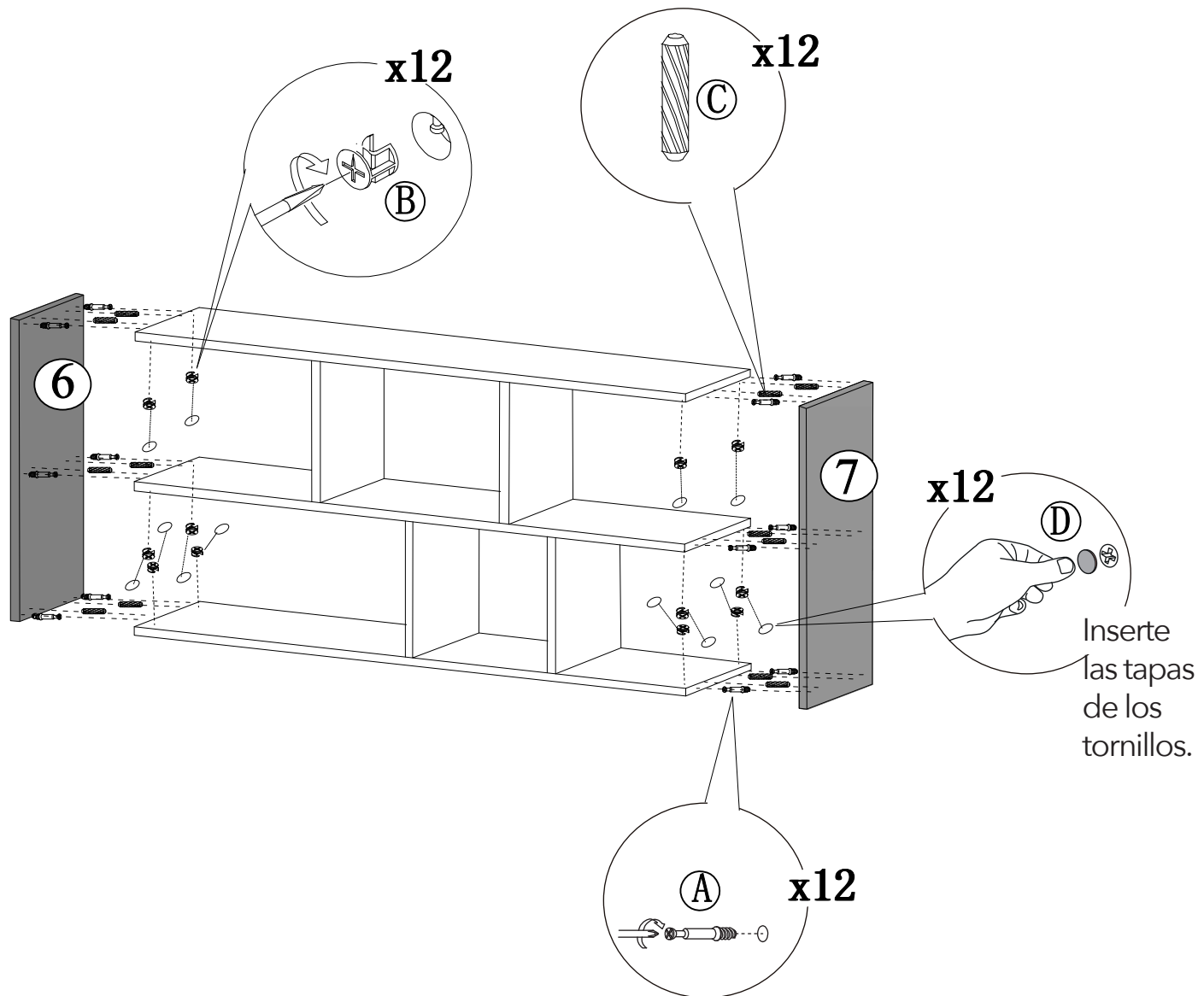


⑦ x1

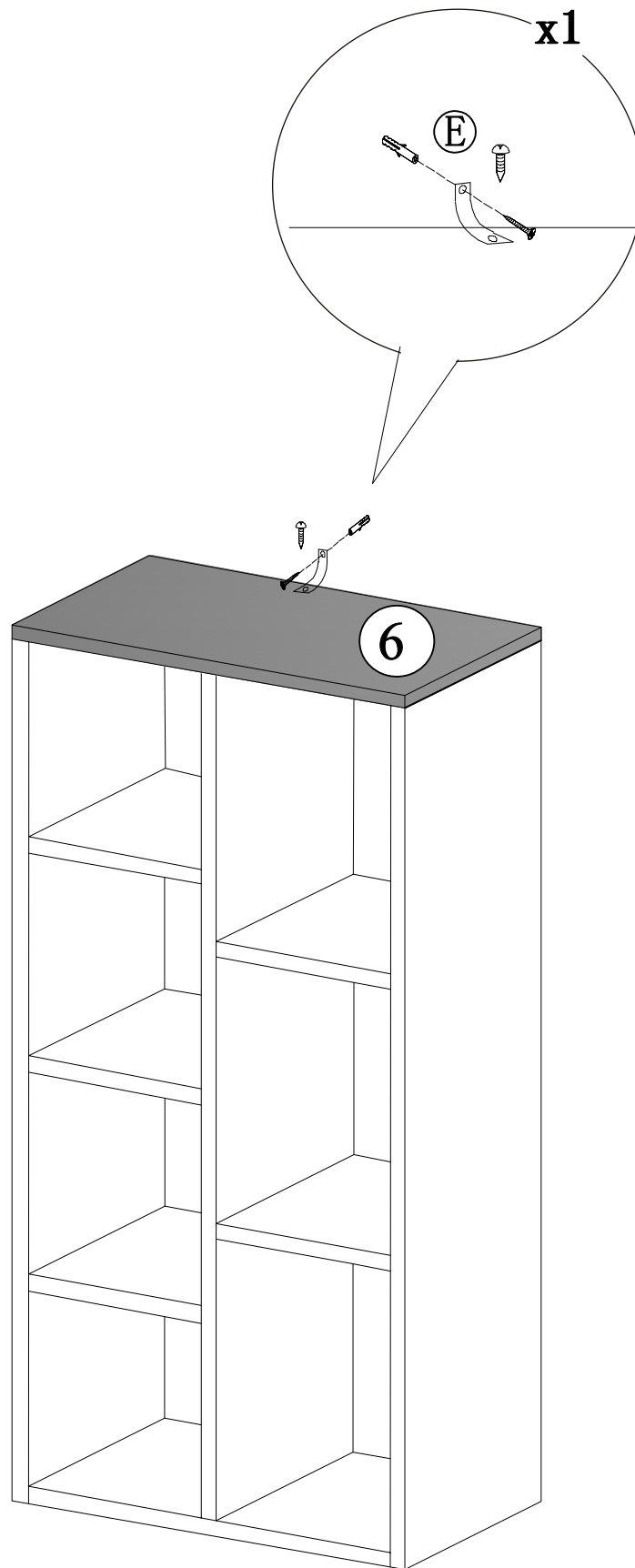
PASO 1

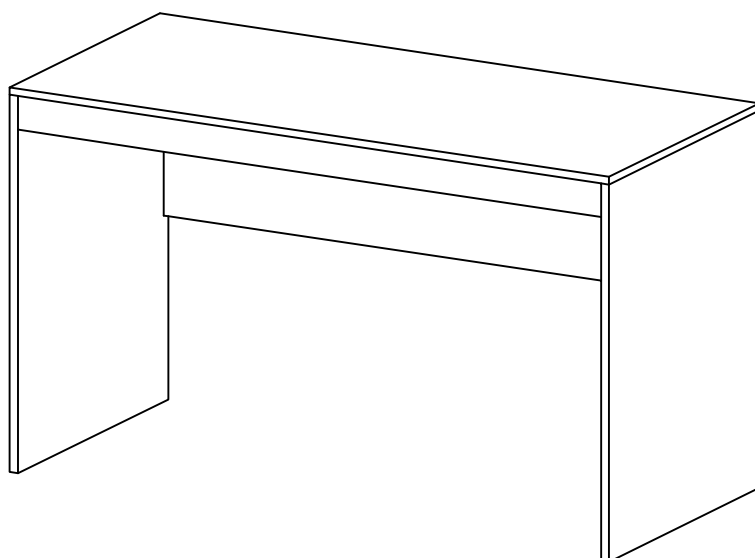


PASO 2

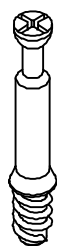


PASO 3





QUINCALLERÍA



Ax16



Bx16

30mm

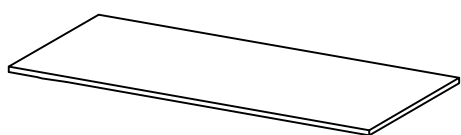


Cx8

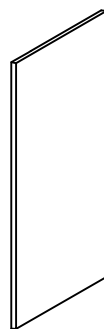


Dx16

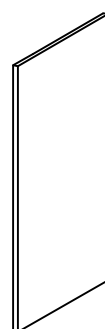
PIEZAS



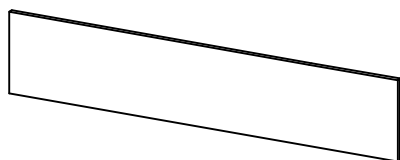
① x1



② x1



③ x1

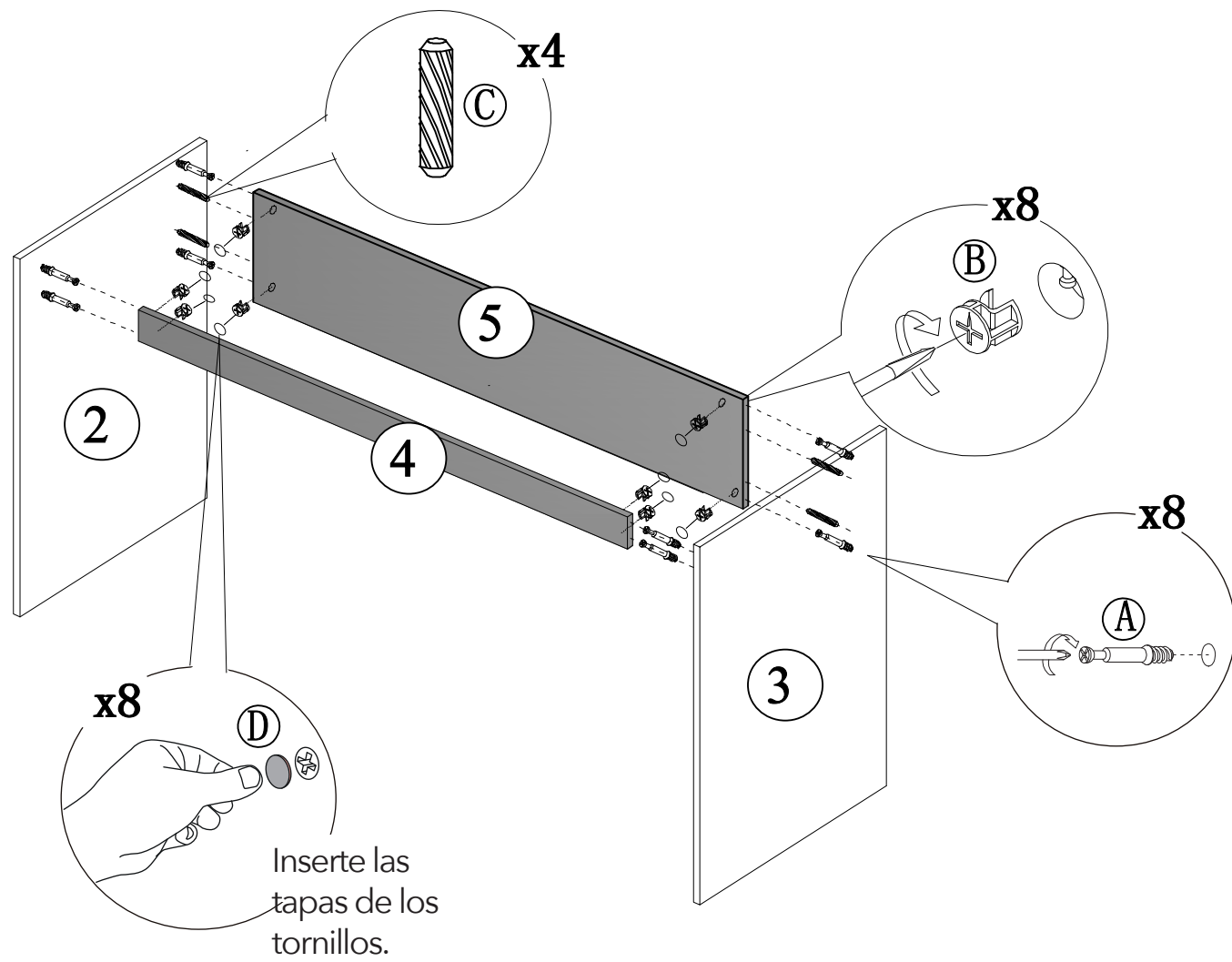


⑤ x1

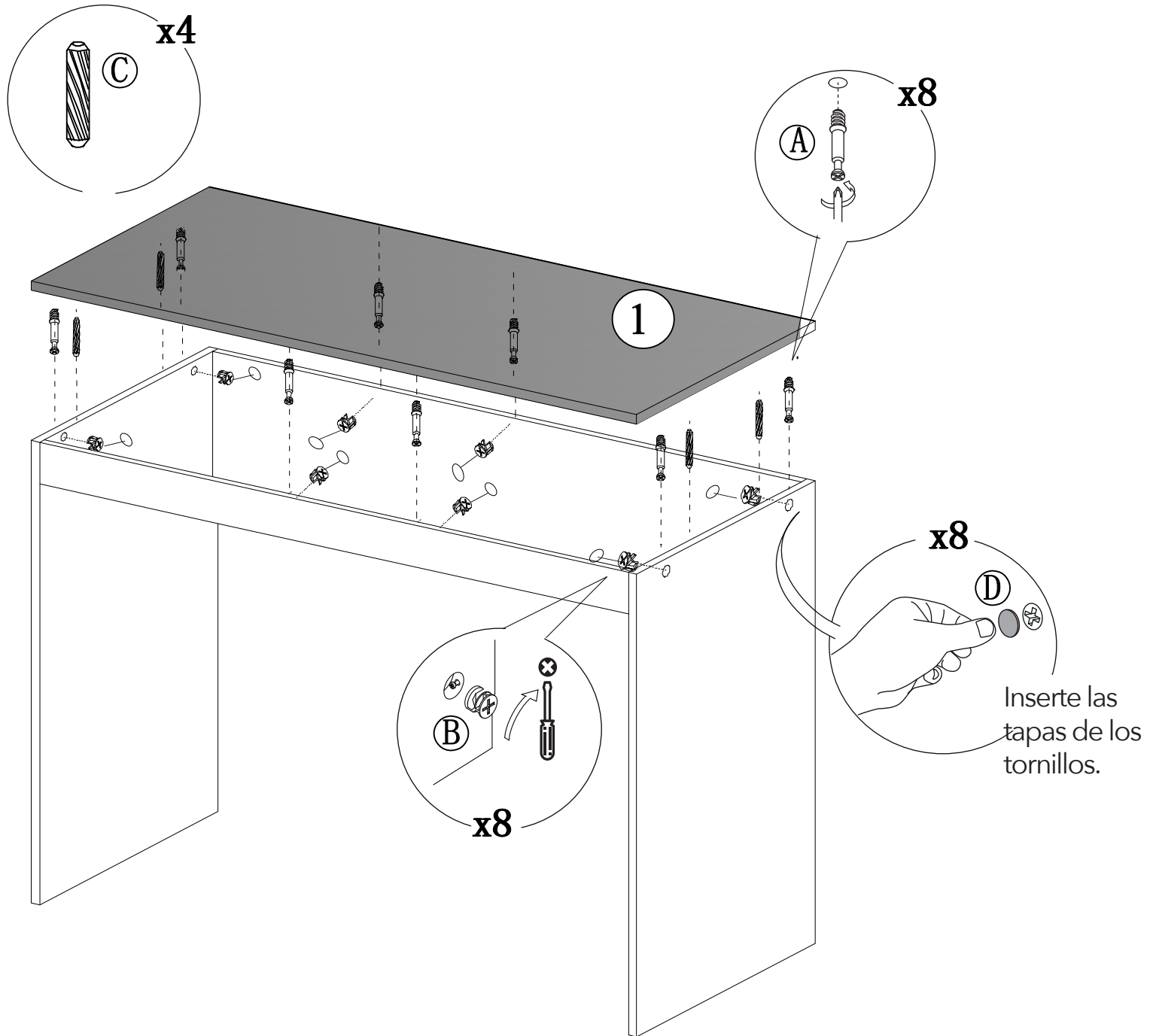


④ x1

PASO 1



PASO 2





TODOS JUNTOS

Entre todos sí es posible
lograr un impacto real
ahorrando papel.

